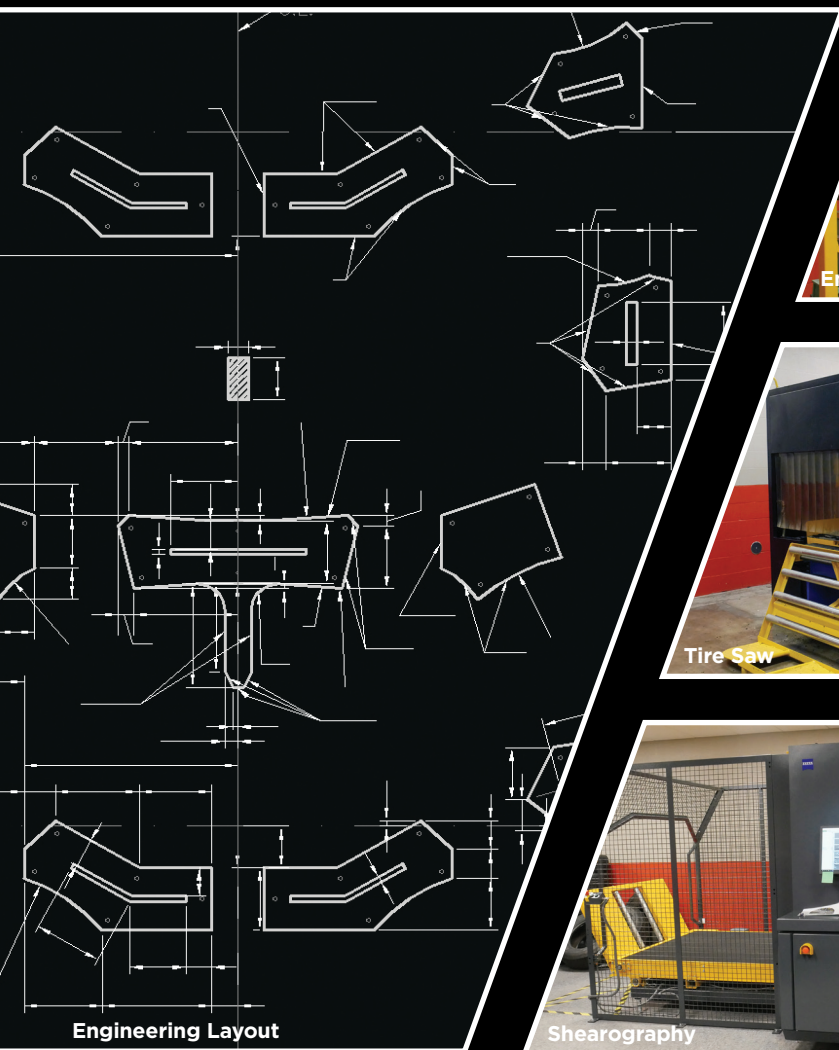




2020

P O W E R S P O R T S



When it comes to traction, there is no margin for error. At the edge of traction is a place where victories, legacies and lives are made and broken.

With stakes like that, we don't take shortcuts. Years of real-world application research, laboratory testing and field validation are molded into the rubber of every design that emerges from our state-of-the-art engineering facility in North Canton, Ohio.

Housed within this facility is a database of hundreds of proprietary "cocktail" compound recipes, closely guarded

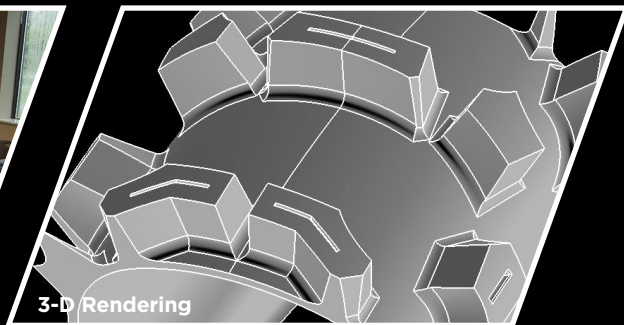
by Kenda's leading team of rubber chemists, each specifically tuned for optimal performance and purposefully designed to excel on select terrain.

Kenda's growing team of Powersports engineers come to work every day—often on two wheels— with one goal: to create class-leading construction and tread innovations. Every ply angle, every block shape and every sipe depth are meticulously designed, tested, optimized, and tested again. And again—until the design meets both stringent regulatory standards and ever-elevated internal performance

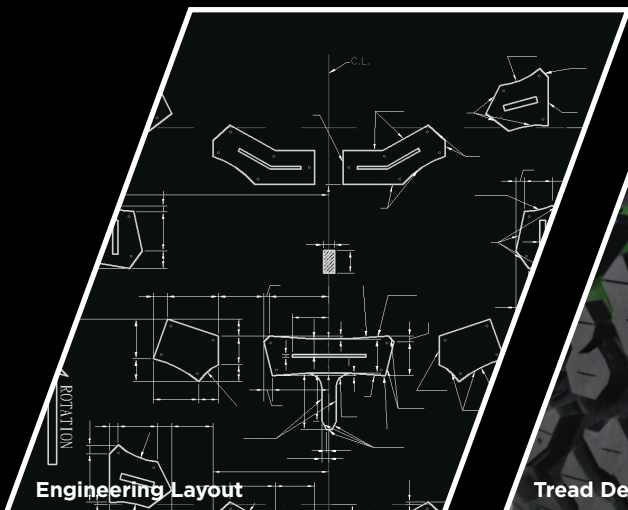
DESIGNED FOR YOUR JOURNEY



Concept Meeting



3-D Rendering



Engineering Layout



Tread Details

targets. Before a design becomes a prototype, it is tested using some of the most advanced predictive modeling tools available today.

Sometimes there are no substitutes for the real thing. In between winning championships on Kenda in some of the toughest races on earth, our world-class team of riders subject prototype tires to test conditions beyond the limits of all but a select few. Rider feedback is relayed directly to engineering, and the iterative development process continues.

By the time a tire touches your wheel rim, Kenda engineers and riders have often spent years testing and tuning the design to exceed your expectations. As you read this, our team is in the lab in North Canton creating the world's next generation of tire. We look forward to sharing it with you.

KENDA

DOUG



HENRY

AMA HALL OF FAMER

AMA Hall-of-Famer Doug Henry is joining forces with Kenda Tire. A multi-disciplined athlete, Henry runs Kenda rubber on his entire line of race bikes and wheelchairs. Henry currently competes in adaptive races across America, and brings extensive product and performance experience to the Kenda team.

LEGENDS RIDE KENDA.



Kenda welcomes multi-time X-Games gold medalist, Jackson "Jacko" Strong to the team!



ATV/UTV TIRES

ATV/UTV

K3204R Klever X/T	11
K576A Kongur.....	11
K3201 Mastodon HT.....	12
K3203 Mastodon AT	12
K587 Bear Claw HTR	13
K299A Bear Claw XL.....	13
K299 Bear Claw	14
K592 Bear Claw EVO.....	14
K538 Executioner.....	15
K530 Pathfinder	15

ATV SPORT

K3210F/K3211 Havok.....	23
K580F/K581 Kutter MX	23
K580F/K581 Kutter XC	23
K532F/K533 Klaw MX	24
K532F/K533 Klaw XC.....	24
K300 Dominator	24
K284 Front Max.....	25
K290 Scorpion.....	25
K572 Road Go	26
K546/K547 Speed Racer..	26
K584 Snow Mad	27

TUBES

Motorcycle Tubes.....	70
ATV / UTV Tubes	72

MOTORCYCLE TIRES

OFF-ROAD

K7102F Washougal III.....	33
K775F/K786 Washougal II	33
K785 Millville II	34
K780 Southwick II.....	34
K781 Triple	35
K772 Parker DT	35
K782 Sand Mad.....	36
K257D Klassic.....	36
K777F/K778 Knarly.....	37
K776F/K779 Gauntlet.....	37
K774 Ibex	39
K787 Equilibrium.....	39

DUAL SPORT/ADVENTURE

K784 Big Block	45
K678 Big Block Paver.....	45
K761 Dual Sport.....	46
K270 Dual Sport.....	46
K760 Trakmaster.....	47
K335 IceTire	47

STREET

KR20 Kanine	52
K6702 Cataclysm.....	52
K673 Kruz	53
K657 Challenger.....	53
K676 Retroactive	54
K671 Cruiser	54

SCOOTER

K784 Big Block	61
K262 Small Block.....	61
KD1 Kwick	62
K413	62
K6022 Kozmik.....	63
K701 Winter.....	63
K329	64
K433F/K434	64
K764	65
K453	65

TIRE SELECTION

When selecting Kenda tires for your vehicle, be sure they meet the requirements of the intended use. Make sure your tire meets your vehicle's speed requirements and load carrying capacity. Contact Kenda for more information.

FRONT/REAR TIRE MATCHING

Tires designated as front wheel fitment should only be mounted in the front position. Likewise, tires designated for rear wheel fitment should only be mounted in the rear position. Mixing new and used front and rear tires, and vice versa, can cause instability and unpredictable handling. Likewise, mixing radials and non-radials can also cause the same issues. Kenda recommends that you do not mix either of these, as it is unsafe.

TUBES

When fitting a new tire on a wheel/rim requiring a tube, a new tube should be installed at the same time. Old tubes become stretched. If an old tube is fitted within a new tire, it can crease and fail due to thinning of the tube rubber. Kenda does not recommend repairing tubes. Make sure to check the size marking on the tube to be sure it matches your tire size. Do not fit Kenda tubes in radial motorcycle tires. Contact Kenda for more information.

TIRE PRESSURES & TIRE INSPECTION

Always check your tire pressure before each ride and inspect your tires' wear for possible damage before each ride. It is by far the most important function of tire maintenance you can perform. If you add heavier loads or another passenger to your vehicle, a higher tire pressure is required. Never exceed the maximum load indicated on tire sidewall or vehicle capacity load found in the owner's manual. Underinflated tires can result in tire failure. Contact Kenda and consult your owners manual for more information.

SPEED RATINGS

SEE SPEED RATINGS CHART ON THE NEXT PAGE. Speed ratings are recognized by the Industry Standards Organization (ISO). Always match the tire speed rating to your vehicle requirement. Contact Kenda or consult your owners manual for more information.

RUN-IN PERIOD

New tires should not be subjected to maximum power or extreme cornering until the new tire has traveled at least 100 miles. This will allow the rider to get used to the feel of the tires and their performance characteristics. Remember, a new tire has different performance characteristics than a used tire of the same make/model.

TIRE REPAIR AND MODIFICATION

Kenda does not recommend repairing tires. Kenda also does not recommend the use of liquid sealants as a tire repair device. Kenda does not recommend ANY type of tire modification. Instead, faulty tires should be replaced with comparable new tires.

WHEELS AND TIRE BALANCE

It is crucial that tire and wheel assemblies are balanced properly before use. Unbalanced tire and wheel assemblies can potentially lead to tire failure. Bent or cracked wheels/ribs should be replaced immediately. Contact your Kenda tire dealer to ensure proper tire and wheel installation and balancing.

LOAD CARRYING CAPACITIES

Make sure your tires have a sufficient load carrying capacity for your vehicle and added weight. When calculating your load capacity, take into account the weight of the vehicle, the weight of any additional luggage or gear, and whether you carry passengers. Proper tire inflation is necessary when making this calculation. Never exceed the vehicle load capacity noted on the VIN plate in your vehicle owner's manual, or the maximum load noted on your tires sidewall.

TIRE INSTALLATION AND MOUNTING

Kenda does not recommend installing your own tires or tubes. Contact your Kenda tire dealer to ensure proper installation and mounting.

TREAD DEPTH

Make sure to replace tires before they reach their tread wear indicator bars (1/32" tread depth remaining). Excessive tread wear can result in tire failure.

TIRE METRICS

LOAD INDEX

L.I.	L.B.	L.I.	L.B.	L.I.	L.B.
33	254	50	419	67	677
34	260	51	430	68	694
35	267	52	441	69	716
36	276	53	454	70	739
37	282	54	467	71	761
38	291	55	481	72	783
39	300	56	494	73	805
40	309	57	507	74	827
41	320	58	520	75	853
42	331	59	536	76	882
43	342	60	551	77	908
44	353	61	567	78	937
45	364	62	584	79	963
46	375	63	600	80	992
47	386	64	617	81	1019
48	397	65	639	82	1047
49	408	66	661	83	1074

KENDA MOTORCYCLE KNOBBY TIRE SIZE CONVERSION CHART

FRONT TIRES		
METRIC	ALPHA	INCH
70/100	80/90	2.75/3
80/100	90/90	3/3.25
90/100	90/100	3.25
REAR TIRES		
METRIC	ALPHA	INCH
90/100	100/80	3.60/4.10
100/90	110/80	4.10/4.60
110/90	120/80	4.50/5.10
110/100	130/80	5.1

KENDA MOTORCYCLE STREET TIRE SIZE CONVERSION CHART

FRONT TIRES		
METRIC	ALPHA	INCH
80/90	MH90	2.50 to 2.75
90/90	MJ90	2.75 to 3
100/90	MM90	3.25 to 3.50
110/90	MN90	3.75 to 4
120/80		4.25 to 4.50
120/90	MR90	4.25 to 4.50
130/90	MT90	5 to 5.10
REAR TIRES		
METRIC	ALPHA	INCH
110/90	MP85	4 to 4.25
120/90	MR90	4.50 to 4.75
130/80		5 to 5.10
130/90	MT90	5 to 5.10
140/80		5.50 to 6
140/90	MU90	5.50 to 6
150/80	MV85	6 to 6.25
150/90	MV85	6 to 6.25

SPEED RATINGS

RATING	MAX MPH
F	50
J	62
K	68
L	74
M	81
N	87
P	94
Q	100

SPEED RATINGS

RATING	MAX MPH
R	106
S	112
T	118
U	124
H	130
V	149
W	168
Y	186

SYMBOLS INDEX



Heavy duty casing for high load carrying capacity.



Lightweight casing to keep overall weight down, and flexibility up.



Sticky race compound for increased traction.



Kenda's stickiest compound for the ultimate in grip.



Eight ply rated for the ultimate in tear and puncture resistance.



Six ply rated for added durability.



Radial casing for increased durability and improved ride



Dual Compound. Combinations of sticky and standard compounds in the center and shoulder tread areas.



**“RACING
IS THE
RELENTLESS
PURSUIT OF
HAPPINESS...
AND TROPHIES.”**

--JASON BALDWIN--



ATV/UTV TIRE TERRAIN GUIDE

TERRAIN GUIDE	DRY, HARD-PACK, BLUE-GROOVE	DRY, LOOSE DIRT, STONES	LOOSE DIRT, LOAM, GRASS	MUD	SAND
ATV / UTV	EXECUTIONER				
	BEAR CLAW XL				
	BEAR CLAW EVO				
	MASTODON AT				
	BEAR CLAW HTR				
	BEAR CLAW				
	MASTODON HT				
	PATHFINDER				
	KONGUR				
	KLEVER X/T				

H HARD-PACK/BLUE GROOVE

D DRY, LOOSE DIRT, STONES

L LOOSE DIRT, LOAM, GRASS

M MUD

S SAND



NEW

KLEVER X/T

K3204R



- Lightest steel-belted 8-ply rated UTV tire on the market
- Studdable design for winter duty in snow and ice
- Smooth ride quality, low rolling resistance, and exceptional traction on all surfaces
- Robust bead protector shields wheels from trail debris and rocks
- DOT approved for road use



KONGUR

K576A



- Ultimate trail and hard terrain UTV/SXS tire
- Radial design enables a smooth quality ride
- Light truck inspired tread pattern
- 8-ply rated, heavy-duty radial
- Meets or exceeds DOT standards (FMVSS S71.119)
- Available in 2 popular sizes



ATV | UTV



MASTODON HT

K3201



- BAJA 1000 winner
- Hard-Terrain (HT) is the ultimate trail and hard terrain UTV/SXS tire
- Smooth ride quality with light truck tire influenced tread pattern
- Built to excel in both high-speed desert conditions and tight, rocky terrain
- 8-ply rated, heavy-duty radial
- Meets or exceeds DOT standards (FMVSS 571.119)
- Available in 8 popular sizes

**MASTODON AT**

K3203



- All-Terrain (AT) is the ultimate “do-it-all” UTV/SXS tire
- Aggressive, open tread design for good clean out performance in mud
- Large contact patch on harder ground conditions for superior traction and durability
- 8-ply rated, heavy-duty radial
- Meets or exceeds DOT standards (FMVSS 571.119)
- Available in 8 popular sizes



BEAR CLAW HTR

K587



- Tread pattern provides high traction on a wide range of terrain
- Center knob design provides low vibration and a smooth ride
- Self-cleaning design
- 8-ply rated, heavy-duty radial
- Available in 11 popular sizes



BEAR CLAW XL

K299A



- Classic design now with deeper tread for soft and muddy terrains
- Angled knobs dig into the terrain for maximum traction
- Center lugs provide extra traction and better control
- Deeper rim guard protects your wheel from dings/dents
- Long-range tread compound
- 6-ply rated casing allows for exceptional puncture resistance while keeping weight to a minimum
- Available in 6 popular sizes



BEAR CLAW

K299



- Angled knobs dig into the terrain for maximum traction
- Center lugs provide extra traction and better control
- Built-in rim guard protects your wheel from dings/dents
- Long-range tread compound
- 6-ply rated extra tough casing resists punctures
- Available in 24 popular sizes

**BEAR CLAW EVO**

K592



- Engineered with a focus on reducing weight without sacrificing durability
- Tread pattern designed to perform exceptionally across all terrains
- Large center knobs for improved straight line and braking traction
- Recessed-dimpled knobs for improved wet traction
- Uniquely shaped transition knobs for improved cornering traction & handling
- 6-ply rated casing allows for exceptional puncture resistance while keeping weight to a minimum
- Available in 10 popular sizes



EXECUTIONER

K538



- Designed for deep down traction, even in the muddiest conditions
- Reinforced knobs reduce roll at low pressure, improve ride comfort and increase tread life
- Dimpled tread surface for improved traction on drier conditions
- Deep rim guard feature for protection against rock and rut damage
- 6-ply rated with extra tough casing resists punctures
- Available in 8 popular sizes



PATHFINDER

K530F/K530



- Ideal choice for riders seeking the best value all-terrain option
- Tread designed for smooth and dependable ride performance
- Available in 14 popular sizes



PART #	FRONT/ REAR	SIZE	PLY RATING	SPEED/ LOAD	OD INCHES	SW INCHES	MAX LOAD LBS	MAX PSI	TREAD DEPTH - MM	WEIGHT LBS	RIM SIZE	TT/TL	DOT Y/N
K299 BEAR CLAW													
082990881C1	REAR	22X12.00-8	6PR	46F	21	11	430	7	20	25	8X9.5AT	TL	N
082990981C1	REAR	22X12.00-9	6PR	51F	22	11	430	7	20	23	9X9.5AT	TL	N
082990979C1	REAR	25X12.50-9	6PR	56F	25	11	495	7	20	29	9X9.5AT	TL	N
082991083C1	FRONT	22X8.00-10	6PR	36F	22	9	275	7	15	17	10X6.0AT	TL	N
082991081C1	REAR	22X12.00-10	6PR	51F	21	11	430	7	20	24	10X6.0AT	TL	N
082991040C1	FRONT	23X7.00-10	6PR	45F	22	7	275	7	20	15	10X5.5AT	TL	N
082991011C1	REAR	23X10.00-10	6PR	46F	23	10	374	7	15	19	10x8.0AT	TL	N
082991089C1	REAR	24X11.00-10	6PR	52F	23	11	440	7	15	20	10X9.0AT	TL	N
082991079C1	REAR	25X12.50-10	6PR	56F	24	12	495	7	20	25	10X9.5AT	TL	N
082991073C1	F/R	22X7.00-11	6PR	32F	22	7	255	7	15	13	11X5.5AT	TL	N
082991185C1	FRONT	23X8.00-11	6PR	38F	23	8	290	7	15	17	11X6.5AT	TL	N
082991191C1	FRONT	24X9.00-11	6PR	45F	24	9	365	7	15	21	11X7.0AT	TL	N
082991113C1	REAR	24X10.00-11	6PR	48F	24	9	395	7	15	19	11X7.5AT	TL	N
082991145C1	FRONT	25X8.00-11	6PR	50F	25	8	340	7	20	18	11X6.5AT	TL	N
082991195C1	REAR	25X10.00-11	6PR	50F	24	10	420	7	20	19	11X8.0AT	TL	N
082991179C1	REAR	25X12.50.11	6PR	56F	24	12	495	7	20	29	11X9.5AT	TL	N
082991215C1	FRONT	24X8.00-12	6PR	56F	23	8	493	10	15	14	12X6.5AT	TL	N
082991245C1	FRONT	25X8.00-12	6PR	43N	24	8	340	7	15	17	12X6.5AT	TL	N
082991292C1	REAR	25X10.00-12	6PR	50N	25	9	420	7	15	20	12X8.0AT	TL	N
082991279C1	REAR	25X12.50-12	6PR	56F	25	11	495	7	15	26	12X9.5AT	TL	N
082991248C1	FRONT	26X9.00-12	6PR	50N	26	9	420	7	15	18	12X7.0AT	TL	N
082991261C1	REAR	26X11.00-12	6PR	55N	26	11	418	7	15	28	12x9.0AT	TL	N
082991299C1	F/R	26X12.00-12	6PR	58L	25	12	520	7	15	26	12X10.5AT	TL	N
082991258C1	FRONT	27X9.00-12	6PR	52N	27	9	440	7	20	23	12X7.0AT	TL	N
082991298C1	F/R	27X10.00-12	6PR	54N	26	10	465	7	15	22	12X8.5AT	TL	N
082991271C1	REAR	27X11.00-12	6PR	56N	27	11	494	7	15	28	12x9.0AT	TL	N
082991294C1	F/R	27X12.00-12	6PR	60L	26	12	550	7	21	30	12X10.5AT	TL	N
K299A BEAR CLAW XL													
082991114C1	REAR	24X10.00-11	6PR	48F	24	10	395	7	24	20	11x7.50AT	TL	N
082991216C1	REAR	24X8.00-12	6PR	35F	24	8	310	7	20	18	12X6.5AT	TL	N
082991246C1	FRONT	25X8.00-12	6PR	38F	25	8	340	7	20	19	12X6.5AT	TL	N
082991247C1	FRONT	25X10.00-12	6PR	45F	25	10	420	7	20	23	12X8.0AT	TL	N
082991280C1	FRONT	25X12.50-12	6PR	51F	25	12	495	7	20	30	12X9.5AT	TL	N
082991291C1	F/R	27X9.00-12	6PR	52F	27	9	440	7	32	26	12X7.0AT	TL	N
K3201 MASTODON HT													
0832011201D1	FRONT	25X8.00R12	8PR	43N	26	8	342	24	18	23	12X7.0AT	TL	N
0832011203D1	REAR	25X10.00R12	8PR	50N	26	10	419	24	18	27	12X8.0AT	TL	N
0832011202D1	FRONT	26X9.00R12	8PR	49N	27	9	408	24	20	28	12X7.0AT	TL	N
0832011204D1	REAR	26X11.00R12	8PR	55N	27	11	480	24	20	31	12X8.0AT	TL	N
0832011205D1	FRONT	27x9.00R12	8PR	66M	27	9	661	38	20	28	12X7.0AT	TL	N
0832011206D1	REAR	27x11.00R12	8PR	71M	27	10	760	38	20	31	12x9.0AT	TL	N
0832101401D1	FRONT	26X9.00R14	8PR	48N	27	9	397	24	20	28	14X7.0AT	TL	N
0832011404D1	REAR	26X11.00R14	8PR	56N	27	11	494	26	20	32	14X8.0AT	TL	N
0832011405D1	FRONT	28X9.00R14	8PR	67M	28	9	676	38	20	31	14X7.0AT	TL	N
0832011402D1	F/R	28X10.00R14	8PR	59M	29	10	536	22	20	32	14X8.0AT	TL	N
0832011406D1	REAR	28X11.00R14	8PR	73M	28	10	804	38	20	33	14x9.0AT	TL	N

PART #	FRONT/ REAR	SIZE	PLY RATING	SPEED/ LOAD	OD INCHES	SW INCHES	MAX LOAD LBS	MAX PSI	TREAD DEPTH - MM	WEIGHT LBS	RIM SIZE	TT/TL	DOT Y/N
0832011403D1	F/R	30X10.00R14	8PR	63M	31	10	600	22	20	35	14X8.0AT	TL	N
0832011407D1	F/R	32X10.00R14	8PR	78M	332	10	937	38	20	40	14X8.0AT	TL	N
0832011501D1	F/R	30X10.00R15	8PR	73M	30	10	804	38	20	37	15X8.0AT	TL	N
0832011502D1	F/R	32X10.00R15	8PR	77M	32	10	908	38	20	41	15X8.0AT	TL	N
0832011503D1	F/R	33X10.00R15	8PR	80M	33	10	992	38	20	42	15X8.0AT	TL	N
0832011504D1	F/R	35X10.00R15	8PR	84M	35	10	1102	38	20	45	15X8.0AT	TL	N
K3203 MASTODON AT													
0832031201D1	FRONT	25X8.00R12	8PR	43N	26	8	342	24	18	23	12X7.0AT	TL	N
0832031203D1	REAR	25X10.00R12	8PR	50N	26	10	419	24	18	27	12X8.0AT	TL	N
0832031202D1	FRONT	26X9.00R12	8PR	49N	27	9	408	24	20	28	12X7.0AT	TL	N
0832031204D1	REAR	26X11.00R12	8PR	55N	27	11	480	24	20	31	12X8.0AT	TL	N
0832031205D1	FRONT	27X9.00R12	8PR	66M	27	9	661	38	20	28	12X7.0AT	TL	N
0832031206D1	REAR	27X11.00R12	8PR	71M	27	10	760	38	20	31	12X9.0AT	TL	N
0832031401D1	FRONT	26X9.00R14	8PR	48N	27	9	397	24	20	28	14X7.0AT	TL	N
0832031404D1	REAR	26X11.00R14	8PR	56N	27	11	494	26	20	32	14X8.0AT	TL	N
0832031405D1	FRONT	28X9.00R14	8PR	67M	28	9	676	38	20	31	14X7.0AT	TL	N
0832031402D1	FRONT/ REAR	28X10.00R14	8PR	59M	29	10	536	22	20	32	14X8.0AT	TL	N
0832031406D1	REAR	28X11.00R14	8PR	73M	28	10	804	38	20	33	14X9.0AT	TL	N
0832031403D1	FRONT/ REAR	30X10.00R14	8PR	63M	31	10	600	22	20	35	14X8.0AT	TL	N
0832031407D1	FRONT/ REAR	32X10.00R14	8PR	78M	332	10	937	38	20	40	14X8.0AT	TL	N
0832031501D1	FRONT/ REAR	30X10.00R15	8PR	73M	30	10	804	38	20	37	15X8.0AT	TL	N
0832031502D1	FRONT/ REAR	32X10.00R15	8PR	77M	32	10	908	38	20	41	15X8.0AT	TL	N
0832031503D1	FRONT/ REAR	33X10.00R15	8PR	80M	33	10	992	38	20	42	15X8.0AT	TL	N
0832031504D1	FRONT/ REAR	35X10.00R15	8PR	84M	35	10	1102	38	20	45	15X8.0AT	TL	N
085381298C1	FRONT	26X10.00-12	6PR	52L	26	10	440	7	26.50	29	12X8.0AT	TL	N
085381299C1	REAR	26X12.00-12	6PR	58L	26	12	520	7	26.50	34	12X9.5AT	TL	N
085381298C1	FRONT	27X10.00-12	6PR	54F	27.10	9.80	465	7	29.50	32	12*7.0	TL	N
085381298C1	REAR	27X12.00-12	6PR	60F	27.20	11.30	550	7	29.50	35	12*8.5	TL	N
085381465C1	FRONT	28X9.00-14	6PR	51L	28.00	8.50	430	7	29.50	28	14X7.0AT	TL	N
085381467C1	REAR	28X11.00-14	6PR	58L	28	10	520	7	30	32	14X8.0AT	TL	N
K3204R KLEVER XT													
083204141D1	FRONT	27X9.00R14	8PR	65M	27	9	636	38	17	31	14X7.0AT	TL	Y
083204142D1	REAR	27X11.00R14	8PR	71M	27	11	770	38	17	33	14X8.0AT	TL	Y
083204143D1	FRONT/ REAR	28X10.00R14	8PR	70M	28	10	744	38	17	35	14X8.0AT	TL	Y
083204144D1	FRONT/ REAR	30X10.00R14	8PR	74M	30	10	845	38	17	37	14X8.0AT	TL	Y
083204145D1	FRONT/ REAR	32X10.00R14	8PR	79M	32	10	957	38	17	39	14X8.0AT	TL	Y
083204151D1	FRONT/ REAR	32X10.00R15	8PR	78M	32	10	938	38	17	39	14X8.0AT	TL	Y
K576A KONGUR													
085761401D1	F/R	28X10.00R14	8PR	59M	29	10	536	22	11	34	14X7.0AT	TL	N
085761402D1	F/R	30X10.00R14	8PR	63M	31	11	600	22	11	39	14X7.0AT	TL	N

PART #	FRONT/ REAR	SIZE	PLY RATING	SPEED/ LOAD	OD INCHES	SW INCHES	MAX LOAD LBS	MAX PSI	TREAD DEPTH - MM	WEIGHT LBS	RIM SIZE	TT/TL	DOT Y/N
K587 BEAR CLAW HTR													
085871245D1	FRONT	25X8.00R12	8PR	43N	25.40	8.20	340	7	21	21.45	12X7.0AT	TL	N
085871295D1	REAR	25X10.00R12	8PR	50N	25.40	10.00	420	7	21	25.41	12X8.0AT	TL	N
085871269D1	FRONT	26X9.00R12	8PR	49N	26.40	9.10	408	7	21	25.35	12X7.0AT	TL	N
085871261D1	REAR	26X11.00R12	8PR	55N	26.50	11.10	481	7	21	31.14	12X8.0AT	TL	N
085871258D1	FRONT	27X9.00R12	8PR	52N	27.20	9.20	440	7	21	24.79	12X7.0AT	TL	N
085871271D1	REAR	27X11.00R12	8PR	56N	27.40	11.00	494	7	21	30.86	12X8.0AT	TL	N
085871469D1	FRONT	26X9.00R14	8PR	48N	26.40	9.30	396	7	21	26.24	14X7.0AT	TL	N
085871461D1	REAR	26X11.00R14	8PR	54N	26.40	10.90	465	7	21	30.14	14X8.0AT	TL	N
085871462D1	F/R	27X9.50R14	8 PR		27	10	520	7	21	28	14X7.0AT	TL	N
085871465D1	FRONT	28X9.00R14	8PR	51L	28.10	8.66	430	7	21	25.74	14X7.0AT	TL	N
085871467D1	REAR	28X11.00R14	8PR	58L	28.10	10.40	520	7	21	34.09	14X8.0AT	TL	N
K592 BEAR CLAW EVO													
085921245C1	FRONT	25X8.00-12	6PR	43N	25	8	340	7	15	17	12X7.0AT	TL	N
085921292C1	REAR	25X10.00-12	6PR	50N	25	10	420	7	15	21	12X8.0AT	TL	N
085921248C1	FRONT	26X9.00-12	6PR	49N	26	9	408	7	19	22	12X7.0AT	TL	N
085921261C1	REAR	26X11.00-12	6PR	55N	26	11	481	7	19	28	12X8.0AT	TL	N
085921258C1	FRONT	27X9.00-12	6PR	52N	27	9	440	7	20	24	12X7.0AT	TL	N
085921271C1	REAR	27X11.00-12	6PR	56N	27	11	494	7	20	30	12X8.0AT	TL	N
085921448C1	FRONT	26X9.00-14	6PR	48N	26	9	396	7	19	23	14X7.0AT	TL	N
085921461C1	REAR	26X11.00-14	6PR	54N	26	11	465	7	19	23	14X8.0AT	TL	N
085921465C1	FRONT	28X9.00-14	6PR	51L	28	9	430	7	20	24	14X7.0AT	TL	N
085921446C1	REAR	28X11.00-14	6PR	58L	28	10	520	7	20	26	14X8.0AT	TL	N







**“WHY
SETTLE
FOR TWO
WHEELS
WHEN
YOU CAN
HAVE
FOUR?”**

--BRIAN DARST--

SPORT ATV TIRE TERRAIN GUIDE

TERRAIN GUIDE	DRY, HARD-PACK, BLUE-GROOVE	DRY, LOOSE DIRT, STONES	LOOSE DIRT, LOAM, GRASS	MUD	SAND	
SPORT ATV	← KUTTER XC →		→			
	← FRONT MAX →		→			
	← HAVOK →		→	→		
	← DOMINATOR →		→			
	← KLAW XC →		→			
	← KUTTER MX →		→			
	← KLAW MX →		→			
	← SCORPION →		→			
	← SPEED RACER →					← SNOW MAD →
	← ROAD GO →					

- H** HARD-PACK/BLUE GROOVE
- D** DRY, LOOSE DIRT, STONES
- L** LOOSE DIRT, LOAM, GRASS
- M** MUD
- S** SAND



NEW

HAVOK

K3210F/K3211

HAVOK

KENDA



- Optimized tread spacing designed for all sport and race ATV applications
- Unique race compound delivers superior traction while extending tread life
- Laboratory-tested and competition-proven in the most demanding conditions
- Non-directional 6-ply-rated carcass
- All-new profile for predictable steering, braking and acceleration



KUTTER MX, XC

K580F/K581



KUTTER MX

- Tread pattern provides more biting edges for improved traction
- Sticky rubber compound for the ultimate in traction
- Lightweight 4-ply casing structure with reinforced sidewalls
- Tread profile adds larger footprint on the ground
- Available in 3 popular sizes



KUTTER XC

- Designed to meet the demands of the toughest off-road terrain
- Large durable knob shapes to provide extra traction and long life
- Large footprint for extra traction
- Heavy duty 6-ply rated casing perfected to handle tough terrain
- Available in 6 popular sizes



KLAW MX, XC

K532F/533



KLAW MX

- Reversible rotation direction for either soft or hard terrain
- Lightweight 4-ply rated casing reduces unsprung weight
- Available in 3 popular sizes



KLAW XC

- 6-ply rated casing
- Meets the demands of the toughest cross country terrain
- Performs in a mix of terrains ranging from cross country to short course racing
- Reversible rotation direction for either soft or hard terrain
- Available in 11 popular sizes



DOMINATOR

K300



- Professional technology designed for the recreational rider
- Split knob design for exceptional cornering and braking
- Available in 12 popular sizes



FRONT MAX

K284



- First front rib tire designed exclusively for ATV use
- Reinforced knobs for superior tracking and cornering
- One of the best and most popular replacement tires on the market
- Puncture resistant casing
- Available in 8 popular sizes

SCORPION

K290



- Provides versatility for a mix of terrains and applications
- Ideal choice for riders seeking all-terrain performance at a low price
- Lightweight, easy rolling design
- Puncture resistant
- Good rear match for our K284 Front Max
- Available in 11 popular sizes



ROAD GO

K572



- Designed for harder surfaces
- Low-void tread pattern for reduced road noise and improved traction
- Low rolling resistance
- Quiet/supple riding tire
- Available in 8 popular sizes



SPEEDRACER

K546F/K547



- Excellent design for harder surface sport riding
- Low-void tread pattern for reduced road noise and improved traction
- Directional tread pattern
- Available in 12 popular sizes



SNOW MAD

K584



- Tread pattern and compound designed specifically for winter conditions
- Lightweight, flexible casing to allow tire growth at speed and cushion on bumps
- Available in 2 popular sizes




ATV | SPORT



PART #	FRONT/ REAR	SIZE	PLY RATING	SPEED/ LOAD	OD INCHES	SW INCHES	MAX LOAD LBS	MAX PSI	TREAD DEPTH - MM	WEIGHT LBS	RIM SIZE	TT/TL	DOT Y/N
K284 FRONT MAX													
082840874A1	FRONT	20X7.00-8	2PR	23F	21	7	195	5	13	15	8X5.5AT	TL	N
082840884A1	FRONT	22X11.00-8	2PR	43F	22	10	340	5	15	17	8X9.0AT	TL	N
082840982A1	FRONT	21X8.00-9	2PR	29F	21	7	225	5	13	12	9X6.5AT	TL	N
082841080A1	FRONT	21X7.00-10	2PR	25F	21	7	205	5	13	12	10X5.5AT	TL	N
082841083A1	FRONT	22X8.00-10	2PR	31F	21	7	240	5	13	11	10x5.5AT	TL	N
082841084A1	FRONT	22X11.00-10	2PR	42F	23	10	330	5	13	17	10X9.0AT	TL	N
082841185A1	FRONT	23X8.00-11	2PR	33F	23	8	255	10	13	16	11X6.5AT	TL	N
082841190A1	FRONT	23.5X8.00-11	2PR	33F	23	8	255	10	13	16	11X6.5AT	TL	N
K290 SCORPION													
082900657A1	REAR	14.5X7.00-6	2PR	18F	14	5	165	5	5	4	6x4.5AT	TL	N
082900762A1	REAR	16X8.00-7	2PR	28F	15	8	220	5	7	7	7x6.5AT	TL	N
082900870A1	REAR	18X9.50-8	2PR	26F	18	9	233	5	10	11	8X7.0AT	TL	N
082900840A1	REAR	19X7.00-8	2PR	30F	19	7	233	5	10	9	8X5.5AT	TL	N
082900874A1	REAR	20X7.00-8	2PR	23F	19	7	195	5	10	10	8X5.5AT	TL	N
082900876A1	REAR	20X10.00-8	2PR	35F	20	9	265	5	12	13	8X8.0AT	TL	N
08290088DA1	REAR	22X10.00-8	2PR	39F	22	10	265	5	13	16	8X8.0AT	TL	N
082900884A1	REAR	22X11.00-8	2PR	43F	22	10	340	5	13	19	8X9.0AT	TL	N
082900976A1	REAR	20X10.00-9	2PR	34F	20	9	260	5	12	12	9X8.0AT	TL	N
082900992A1	REAR	25X12.00-9	2PR	51F	24	11	430	5	14	20	9X9.5AT	TL	N
082901191A1	REAR	24X9.00-11	2PR	40F	26	9	310	10	14	19	11X7.0AT	TL	N
K300 DOMINATOR													
083000874B1	FRONT	20X7.00-8	4PR	23F	20	7	195	5	12	10	8X5.5AT	TL	N
083000846B1	REAR	20X11.00-8	4PR	38F	20	11	290	5	12	14	8X9.0AT	TL	N
083000884B1	REAR	22X11.00-8	4PR	43F	22	11	340	5	13	17	8X9.0AT	TL	N
083000973B1	REAR	20X11.00-9	4PR	38F	20	11	290	5	12	14	9X9.0AT	TL	N
083000984B1	REAR	22X11.00-9	4PR	43F	21	11	340	5	13	15	9X9.0AT	TL	N
083001080B1	FRONT	21X7.00-10	4PR	25F	21	7	205	5	12	10	10X5.5AT	TL	N
083001083B1	FRONT	22X8.00-10	4PR	31F	22	8	240	5	12	13	10X6.0AT	TL	N
083001073B1	REAR	20X11.00-10	4PR	37F	20	11	280	5	12	16	10X9.0AT	TL	N
083001084B1	REAR	22X11.00-10	4PR	42F	22	11	330	5	12	18	10X9.0AT	TL	N
K532 KLAW MX/XC													
085321032B1	FRONT	20X6.00-10	4PR	17F	19	7	160	5	10	9	10X5.5AT	TL	N
085321080C1	FRONT	21X7.00-10	6PR	30N	21	7	235	7	10	9	10X5.5AT	TL	N
085321005C1	FRONT	22X7.00-10	6PR	33F	22	7	255	7	12	12	10*5.5	TL	N
085321040C1	FRONT	23X7.00-10	6PR	35F	23	7	275	7	15	13	10x5.5AT	TL	N
085321245C1	FRONT	25X8.00-12	6PR	38F	25	8	340	7	14	16	12X6.5AT	TL	N
K533 KLAW MX/XC													
085330809B1	REAR	18X10.50-8	4PR	29F	18	10	225	5	13	13	8X8.5AT	TL	N
085330909B1	REAR	18X10.50-9	4PR	32F	18	10	245	5	13	13	9X9.0AT	TL	N
085330846C1	REAR	20X11.00-8	6PR	38F	21	11	340	7	13	16	8X9.0AT	TL	N
085330884C1	REAR	22X11.00-8	6PR	43F	23	12	395	7	13	20	8X9.0AT	TL	N
085330973C1	REAR	20X11.00-9	6PR	43F	21	11	340	7	13	16	9X9.0AT	TL	N
085330984C1	REAR	22X11.00-9	6PR	43F	23	11	395	7	13	19	9X9.0AT	TL	N
085331073C1	REAR	20X11.00-10	6PR	42F	21	10	330	7	13	18	10X9.0AT	TL	N
085331084C1	REAR	22X11.00-10	6PR	47F	23	11	385	7	13	19	10X9.0AT	TL	N
085331292C1	REAR	25X10.00-12	6PR	50N	25	10	420	7	13	20	12X8.0AT	TL	N

PART #	FRONT/REAR	SIZE	PLY RATING	SPEED/LOAD	OD INCHES	SW INCHES	MAX LOAD LBS	MAX PSI	TREAD DEPTH - MM	WEIGHT LBS	RIM SIZE	TT/TL	DOT Y/N
K546 SPEED RACER FRONT													
085460840B1	FRONT	19X7.00-8	4PR	20N	19	7	175	5	10	11	8X5.5AT	TL	N
085460874B1	FRONT	20X7.00-8	4PR	23N	20	7	195	5	10	13	8X5.5AT	TL	N
085461080B1	FRONT	21X7.00-10	4PR	25N	21	7	205	5	10	13	10X5.5AT	TL	N
085461245C1	FRONT	25X8.00-12	6PR	43N	25	8	340	7	10	19	12X6.5AT	TL	N
K547 SPEED RACER REAR													
085470870B1	REAR	18X9.50-8	4PR	30N	18	9	233	5	10	14	8X7.0AT	TL	N
085470841B1	REAR	19X8.00-8	4PR	24N	19	9	200	5	10	13	8X7.0AT	TL	N
085470881B1	REAR	21X10.00-8	4PR	37N	21	11	280	5	10	17	8X8.0AT	TL	N
085470878B1	REAR	22X10.00-8	4PR	39N	22	10	300	5	10	18	8X8.0AT	TL	N
085470993B1	REAR	20X11.00-9	4PR	38N	21	11	290	5	10	18	9X9.0AT	TL	N
085471009B1	REAR	18X10.00-10	4PR	34N	19	10	260	5	10	16	10x8.0AT	TL	N
085471078B1	REAR	22X10.00-10	4PR	55N	22	10	480	5	10	17	10x8.0AT	TL	N
085471295C1	REAR	25X10.00-12	6PR	50N	25	9	420	7	10	21	12X8.0AT	TL	N
K572 ROAD GO													
085720870B1	FRONT	18X9.50-8	4PR	30N	18	9	235	5	9	12	8X7.0AT	TL	N
085720840B1	REAR	19X7.00-8	4PR	20N	19	7	175	5	9	12	8X5.5AT	TL	N
085720881B1	REAR	21X10.00-8	4PR	37N	21	10	280	5	9	10	8X8.0AT	TL	N
085720946B1	REAR	20X11.00-9	4PR	38N	20	11	290	5	9	13	10X9.0AT	TL	N
085721080B1	FRONT	21X7.00-10	4PR	25N	21	7	205	5	9	15	10X5.5AT	TL	N
085721080B1	REAR	22X10.00-10	4PR	55N	22	10	480	5	9	11	10X5.5AT	TL	N
085721245B1	FRONT	25X8.00-12	4PR	38N	25	8	290	5	9	15	12X6.5AT	TL	N
085721295B1	REAR	25X10.00-12	4PR	45N	25	10	365	5	9	16	12X8.0AT	TL	N
K580 KUTTER MX/XC													
085800946C1	REAR	20X11.00-9	6PR	40N	22	9	308	7	15	16	11X7.0AT	TL	N
085801021B1	FRONT	19X6.00-10	6PR	19N	19	6	168	7	12	10	10X5.0AT	TL	N
085801080B1	FRONT	20X6.00-10	4PR	17J	20	7	161	5	10	9	10X5.5AT	TL	N
085801080C1	FRONT	21X7.00-10	6PR	30N	21	7	235	7	15	13	10X5.5AT	TL	N
085801005C1	FRONT	22X7.00-10	6PR	33N	22	7	255	7	15	14	10X5.5AT	TL	N
K581 KUTTER MX/XC													
085810868B1	REAR	18X8.00-8	6PR	26N	18	8	210	7	12	12	8X7.0AT	TL	N
085810809B1	REAR	18X10.00-8	4PR	29J	18	10	255	5	12	10	8X8.5AT	TL	N
085810909B1	REAR	18X10.00-9	4PR	32J	18	10	245	7	12	13	9X8.0AT	TL	N
085811771C1	REAR	22X9.00-11	6PR	40N	22	9	308	7	15	16	11X7.0AT	TL	N
K584 SNOW MAD													
045840807A1	REAR	22X10.00-8	2PR	39F	22	10	245	4	14	6	8X8.5AT	TL	N
085840978A1	REAR	22X10.00-9	2PR	39F	22	10	245	4	14	13	9X8.5	TL	N
K3210F/K3211 HAVOK													
083210108C1	FRONT	21X7-10	6PR	43N	21	7	235	7	14	11	10.X5.5	TL	N
083211104C1	REAR	20X11-9	6PR	30N	20	11	340	7	13	15	9X9.0	TL	N

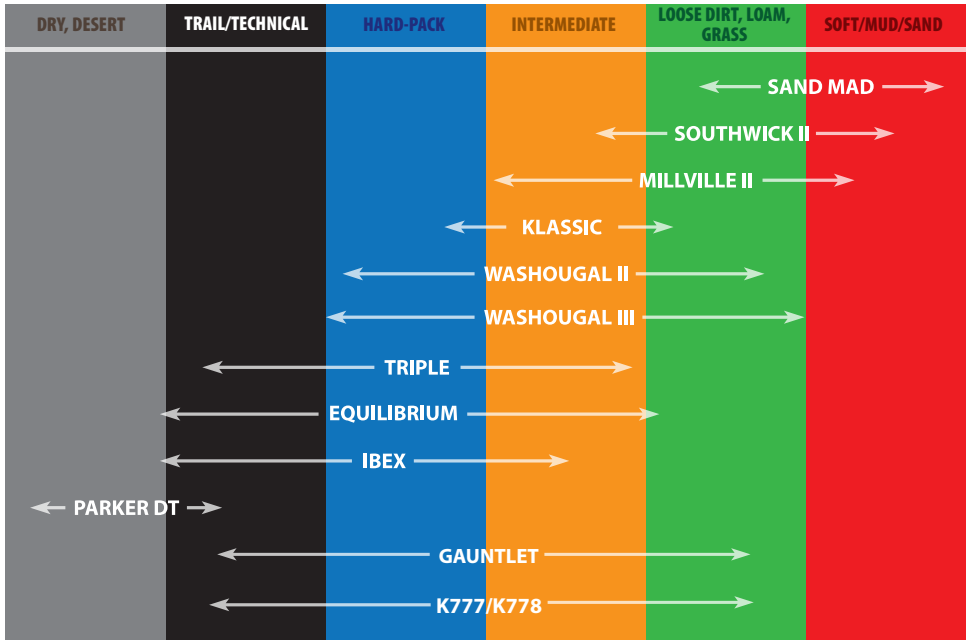




***“THERE IS NO
MARGIN OF
ERROR IN FMX;
YOU NEED
GOOD RUBBER
AND THAT’S
WHY I SEND IT
ON KENDAS.”***

--JACKSON STRONG--

OFF-ROAD TIRE TERRAIN GUIDE



- D** DRY, DESERT
- T** TRAIL/TECHNICAL
- H** HARD-PACK/BLUE GROOVE
- I** INTERMEDIATE
- L** LOOSE DIRT, LOAM, GRASS
- S** SOFT/MUD/SAND



AMA HALL OF FAME RACER, DOUG HENRY

NEW

WASHOUGAL III

K7102F



- First offroad tire with Kenda's Advanced Apex (AA) technology for increased lateral response and optimal carcass stiffness
- All new tread design allows for faster forward roll, increased side bite, and controlled flex without washing out
- Unique sipe and groove orientation allow for linear cornering characteristics and superb braking control
- Larger footprint for better grip in every condition
- Deepest front tread in the offroad lineup and still FIM-compliant
- Purposefully designed by Kenda's team of rider / engineers in Ohio, USA
- DOT approved front tire

WASHOUGAL II

K775F/K786



- Multi-time National Off-Road Championship winner
- Dual-compound rear for durability and cornering traction
- Front: Single compound
- Youth sizes feature Sticky compound only
- DOT approved front tire (21" only)
- Available in 17 popular sizes



OFF-ROAD

MILLVILLE II

K785



- Directional designed for soft or intermediate terrain, perfect for MX
- New compound formula for traction and durability
- Improved braking traction due to paddle shape pattern
- Improved cornering traction with more biting edges
- Tie bar knob support to reduce knob squirm and increase durability
- DOT approved front tire (21" only)
- Available in 14 popular sizes

H **I** **L**

SOUTHWICK II

K780



- Designed for sand and mud conditions
- Front and rear tread patterns offer tall knob depths for deep bite
- Large radius support at knob base reduces knob roll
- Wide space between rows self-cleans tread even at slow speed
- Increased wear durability and quick warm-up
- Lightweight 4-ply rated casing structure with reinforced sidewalls
- DOT Approved front tire
- Available in 5 popular sizes

I **L** **S**



TRIPLE

K781



- Developed and tested in Arenacross and Supercross races
- Low profile sidewall for improved cornering stability and cornering traction
- Tread pattern designed for hard packed, slippery surfaces
- Dimpled knobs allow for quick tire warm up and extra traction
- Sticky rubber compound for high traction
- Lightweight 4-ply rated casing structure with reinforced sidewalls
- DOT approved front tire
- Available in 8 popular sizes



PARKER DT

K772



- The ultimate tire for desert terrain
- Casing/compound designed for the toughest hard-packed terrain
- Natural rubber compound for extended tread wear and reduced knob chunking
- 6-Ply rated casing offers 30% more cut resistance
- DOT approved
- Available in 5 popular sizes



SAND MAD

K782



- Designed specifically for deep mud or sandy MX course conditions
- Paddle shaped knobs create a large scoop for improved acceleration traction
- Unique shoulder knob design for predictable cornering traction
- Siped knob surface for quick tire warm up on cement start pads
- Sticky rubber compound for high traction on concrete start gates
- Lightweight 4-ply rated casing structure with reinforced sidewalls
- Available in 2 popular sizes



KLASSIC

K257D



- High quality, value tire sized for most modern and vintage MX and off-road motorcycles
- Aggressive four/five knob pattern provides traction in a variety of terrains
- Old school design adds style to vintage motorcycles
- DOT approved
- Available in 14 popular sizes



NEW

Knarly K777F/778



- Extreme enduro FIM-approved
- Super-soft and flexible for ultimate terrain compliance and grip
- Compound provides highest traction in both wet and dry conditions
- Reversible rear for variable terrain applications
- Available in super wide rear and 3 other popular sizes

T H I L

NEW

GAUNTLET K776F/779F



- Hard enduro FIM-approved
- Perfect balance of sticky grip and long-lasting wear
- Open, aggressive pattern allows for excellent cleanout
- Low front profile provides the best feel and confidence when traction matters most
- Available in super wide rear and 2 other popular sizes

T H I L

OFF-ROAD





IBEX

K774



- Designed for Endurocross and extreme enduro-type conditions
- Super-soft and flexible rubber compound and casing for maximum bump absorption and terrain compliance for obstacles like rock gardens and log crossings
- High wet-traction compound developed by top pro Endurocross riders
- Open, aggressive drive pattern for max grip and cleanout
- Shoulder knob pattern designed for large contact patch and support for soft compound during cornering
- Available in 7 popular sizes



EQUILIBRIUM

K787



- The best qualities of a trials tire and off-road tire all in one product
- Trials inspired center tread design for the best possible traction
- Motocross-style shoulder knobs for aggressive cornering
- Super Sticky race compound for unbeatable grip in both wet and dry conditions
- Braking scoops in center area provide the stopping power that a trials tire can't
- Ultra soft casing for maximum terrain adaptation
- DOT approved
- Available in 2 popular sizes

Warning: The Equilibrium is a D.O.T. approved tire, but it is not recommended for continuous highway use. It is intended for off-road applications that can be legally used "on highway" to connect to off-road trail heads.



PART #	FRONT/ REAR	SIZE	PLY RATING	SPEED/ LOAD	OD INCHES	SW INCHES	MAX LOAD LBS	MAX PSI	TREAD DEPTH - MM	WEIGHT LBS	RIM SIZE	TT/TL	DOT Y/N
K257D KLASSIC													
042571452B0	REAR	410-14	4PR	47M	22	4	507	33	14	8	2.15X14	TT	N
042571636B0	FRONT	300-16	4PR	43M	23	3	342	33	10	6	1.85X16	TT	N
042571764C0	REAR	510-17	6PR	71P	26	5	661	40	16	14	3.00X17	TT	Y
042571852B0	F/R	410-18	4PR	58P	25	4	520	33	14	9	2.15X18	TT	Y
042571852C0	REAR	410-18	6PR	63M	25	4	600	40	14	10	2.15X18	TT	Y
042571860B0	REAR	460-18	4PR	63P	28	5	595	33	17	8	2.15X18	TT	Y
042571858C0	REAR	450-18	6PR	70M	27	5	739	40	17	14	2.15X18	TT	Y
042571864C0	REAR	510-18	6PR	74M	27	5	827	40	16	14	2.15X18	TT	Y
042571866C0	REAR	530-18	6PR	75M	28	5	853	40	16	16	2.50X18	TT	N
042571906C0	REAR	100/90-19	6PR	57M	27	5	507	33	16	12	2.50X19	TT	Y
042571910C0	REAR	110/90-19	6PR	68M	27	5	584	40	16	13	2.15X19	TT	Y
042572134C0	FRONT	300-21	6PR	57M	28	3	430	33	10	9	1.85X21	TT	Y
042572136B0	FRONT	300-21	4PR	51M	28	3	507	40	10	9	1.85X21	TT	Y
042571839B0	REAR	350-18	4PR	56P	25	4	494	33	14	9	2.15X18	TT	N
K772 PARKER DT													
047721811COP	REAR	110/100-18	6 PR	64M	26	5	617	20	16	13	2.15X18	TT	N
047721813COP	REAR	120/100-18	6 PR	68M	27	5	694	20	16	13	2.50X18	TT	N
047721910COP	REAR	110/90-19	6 PR	62M	27	5	584	20	16	13	2.15X19	TT	N
047721991C1	REAR	120/90-19	6 PR	66M	28	5	661	20	16	14	2.50X19	TT	N
04772103COP	FRONT	80/100-21	6 PR	51M	28	4	429	20	12	9	1.60X21	TT	Y
K774 IBEX													
047741441B1CEX	REAR	90/100-14	4PR	49M	22	4	185	20	14	7	1.60X14	TT	N
04771641B1CEX	REAR	90/100-16	4PR	52M	24	4	437	20	14	8	1.85X16	TT	N
047741864CEX	REAR	110/100-18	4PR	64M	26	5	616	20	16	13	2.15X18	TT	N
047741813CEX	REAR	120/100-18	4PR	64M	27	5	693	20	16	14	2.50X18	TT	N
047741913B1CEX	REAR	120/90-19	4PR	66M	28	5	661	20	16	13	2.50X19	TT	N
047742131CEX	FRONT	80/100-21	4PR	51M	28	4	429	20	11	9	1.60X21	TT	Y
047742140CEX	FRONT	90/100-21	4PR	57M	28	4	507	20	11	9	1.60X21	TT	N
K775 WASHOUGAL II													
047751032C0S2	FRONT	250-10	4PR	33J	15	3	253	20	8	3	1.40X10	TT	N
047751232C0S2	FRONT	25-12	4PR	33J	17	3	253	20	8	4	1.40X12	TT	N
047751401C0S2	FRONT	60/100-14	4PR	30M	19	3	233	20	10	4	1.40X14	TT	N
047751702C0S2	FRONT	70/100-17	4PR	40M	23	3	308	20	10	5	1.40X17	TT	N
047751902C0S2	FRONT	70/100-19	4PR	42M	25	3	330	20	10	6	1.40X19	TT	N
047752130COP	FRONT	80/100-21	4PR	51M	28	4	429	20	12	9	1.60X21	TT	Y
047752140COP	FRONT	90/100-21	4PR	57M	28	4	506	20	12	9	1.60X21	TT	Y
K7102F WASHOUGAL III													
04710201	FRONT	80/100-21	4PR	51M	28	3	429	36	14	9	1.60x21	TL	Y
K780 SOUTHWICK													
047801807B0	REAR	100/100-18	4PR	59M	26	5	535	20	17	12	1.85X18	TT	N
047801811B0	REAR	110/100-18	4PR	64M	26	5	616	20	17	12	2.15X18	TT	N
047801905B0	REAR	100/90-19	4PR	57M	27	5	506	20	17	11	1.85X19	TT	N
047801903B0	REAR	110/90-19	4PR	62M	27	5	583	20	17	12	2.15X19	TT	N
047802103B0	FRONT	80/100-21	4PR	51M	28	4	429	20	12	9	1.60X21	TT	Y
K781 TRIPLE													
047811811B1	REAR	110/100-18	4PR	64M	26	5	616	20	15	12	2.15X18	TT	N
047811813B0	REAR	120/100-18	4PR	68M	27	5	693	20	15	14	2.50X18	TT	N

PART #	FRONT/ REAR	SIZE	PLY RATING	SPEED/ LOAD	OD INCHES	SW INCHES	MAX LOAD LBS	MAX PSI	TREAD DEPTH - MM	WEIGHT LBS	RIM SIZE	TT/TL	DOT Y/N
04781906B0	REAR	100/90-19	4PR	57M	27	5	506	20	15	14	1.85X19	TT	N
04781923B0	REAR	110/80-19	4PR	59M	27	5	535	20	15	12	2.15X19	TT	N
04781910B0	REAR	110/90-19	4PR	62M	27	5	583	20	15	14	2.15X19	TT	N
04781979B0	REAR	120/80-19	4PR	63M	27	5	598	20	15	12	2.15X19	TT	N
047812103B1	FRONT	80/100-21	4PR	51M	28	4	429	20	12	9	1.60X21	TT	Y
047812104B0	FRONT	90/100-21	4PR	57M	28	4	506	20	12	9	1.60X21	TT	Y
K782 SAND MAD													
047821905B1	REAR	100/90-19		57M	27	5	506	20	17	11	1.85X19	TT	N
047821910B0	REAR	110/90-19		62M	27	5	583	20	16	13	2.15X19	TT	N
K785 MILLVILLE													
047851203B0	REAR	80/100-12	4PR	41M	18	4	319	20	13	5	1.60X12	TT	N
047851401B0	FRONT	60/100-14	4PR	30M	19	3	233	20	9	4	1.60X14	TT	N
047851404B0	REAR	90/100-14	4PR	49M	21	4	407	20	14	7	1.60X14	TT	N
047851604B0	REAR	90/100-16	4PR	52M	23	4	440	20	14	8	1.85X16	TT	N
047851702B0	FRONT	70/100-17	4PR	40M	23	3	308	20	10	5	1.40X17	TT	N
047851902B0	FRONT	70/100-19	4PR	42M	25	3	330	20	10	6	1.40X19	TT	N
047851811B0	REAR	110/100-18	4PR	64M	26	5	616	20	16	12	2.15X18	TT	N
047851813B0	REAR	120/100-18	4PR	68M	27	5	693	20	16	13	2.50X18	TT	N
047851906B0	REAR	100/90-19	4PR	57M	27	5	506	20	16	13	1.85X19	TT	N
047851923B0	REAR	110/80-19	4PR	59M	27	5	535	20	16	13	2.15X19	TT	N
047851910B0	REAR	110/90-19	4PR	62M	27	5	583	20	16	13	2.15X19	TT	N
047851975B0	REAR	120/80-19	4PR	63M	27	5	598	20	16	12	2.15X19	TT	N
047852130B0	FRONT	80/100-21	4PR	51M	28	4	429	20	12	9	1.60X21	TT	N
047852104B0	FRONT	90/100-21	4PR	57M	28	4	506	20	12	9	1.60X21	TT	N
K786 WASHOUGAL II													
047861003C0S2	REAR	80/100-10		42J	16	3	331	20	9	4	1.40X10	TT	N
047861230C0S2	REAR	80/100-12		41M	18	4	320	20	13	5	1.60X12	TT	N
047861440C0S2	REAR	90/100-14		49M	21	4	408	20	14	8	1.60X14	TT	N
047861640C0S2	REAR	90/100-16		52M	23	4	441	20	14	8	1.85X16	TT	N
047861811C0	REAR	110/100-18		64M	26	5	617	20	16	13	2.15X18	TT	N
047861813C0	REAR	120/100-18		68M	27	5	694	20	16	14	2.50X18	TT	N
047861906C0	REAR	100/90-19		57M	27	5	507	20	16	12	1.85X19	TT	N
047861923C0	REAR	110/80-19		59M	27	5	536	20	16	12	2.15X19	TT	N
047861910C0	REAR	110/90-19		62M	27	5	584	20	16	13	2.15X19	TT	N
047861979C0	REAR	120/80-19		63M	27	5	600	20	16	12	2.15X19	TT	N
K787 EQUILIBRIUM													
047871858C0	REAR	450-18	4PR	70M	27	5	739	33	13	13	2.15X18	TT	Y
047871979C0	REAR	120/80-19	4PR	63M	27	5	595	20	13	12	2.15X19	TT	Y
K776F/K779 GAUNTLET													
047762108C0	FRONT	90/90-21	4PR	54R	28	4	467	33	11	9	1.60X21	TT	Y
047772108C0	FRONT	90/90-21	4PR	54R	28	4	467	33	12	9	1.60X21	TT	Y
K777F/K778 KNARLY													
047781812C0	REAR	120/90-18	4PR	65R	27	5	639	33	13	11	2.15X18	TT	Y
047781821C0	REAR	140/80-18	4PR	70R	27	5	739	33	13	12	2.50X18	TT	Y
047781913C0	REAR	130/80-19	4PR	67R	27	5	677	33	13	11	2.50X18	TT	Y
047791878B0	REAR	130/80-18	4PR	66R	27	5	661	33	13	11	2.50X18	TT	Y
0479182181X	REAR	140/80-18	4PR	70R	27	5	739	33	13	12	2.50X18	TT	Y



**“LIFE IS TOO
SHORT TO
STAY ON THE
PAVEMENT.”**

--AMBER DRAKE--

DUAL SPORT



DUAL SPORT TIRE TERRAIN GUIDE

PAVEMENT	MIXED SURFACE	GRAVEL	DIRT/FIRE ROADS	TRAIL/SINGLE TRACK
← BIG BLOCK PAVER →				
← K 761 DUAL SPORT →				
		← BIG BLOCK →		
		← K 270 DUAL SPORT →		
			← TRAKMASTER →	

- P** PAVEMENT
- M** MIXED SURFACE
- G** GRAVEL
- D** DIRT/FIRE ROADS
- T** TRAIL/SINGLE TRACK



BIG BLOCK

K784



- Our most famous ADV tire provides high traction on a variety of terrain
- Large tread blocks for improved tread wear and high speed handling
- High impact, bias belted, casing structure providing a high level of puncture resistance
- Rubber compound designed specifically for wet-slick & dry-hard packed terrain
- Tubeless
- DOT and E-mark approved
(50% dirt/50% road)
- Available in 12 popular sizes



BIG BLOCK PAVER

K678F/K678



- Designed for adventure riders with a high-performance on-road focus
- Front tread designed to minimize the scalloping common on heavier adventure bikes, while providing long wear and excellent grip in all conditions
- Rear tread designed for high mileage while maintaining the necessary traction in off-highway conditions
- DOT approved, tubeless.
(20% dirt/80% road)
- Available in 9 popular sizes



DUAL SPORT



K761 DUAL SPORT

K761



- One of the world's most popular dual sport tread patterns
- Perfect for road-focused dual sport applications
- Trusted by several major manufacturers for performance and reliability
- Tubeless
- 4-ply rated casing design
- DOT approved
- **(30% dirt/70% road)**
- Available in 29 popular sizes - from youth sizes, scooters, to big bikes



K270 DUAL SPORT

K270



- Proven reliability and performance in the toughest conditions on Earth
- Best value in the Dual Sport category
- Tube type
- 4 and 6-ply rated casings
- DOT approved
- **(40% dirt/60% road)**
- Available in 15 popular sizes



TRAKMASTER

K760

KENDA
TRAKMASTER



- Perfect choice for the recreational trail rider requiring a DOT approved tire to connect the trails on short lengths of pavement
- Tall aggressive knobs designed for varying terrain
- Durable compound for extended tread life
- Classic design at an affordable price
- Tube type
- DOT approved
(90% dirt/10% road)
- Available in 16 popular sizes



ICE TIRE

K335



- Studdable design specifically for ice riding
- Hard rubber compound helps retain studs during extreme riding
- Best performance available at a great value
- Allows up to a 5/8" stud without a liner
- Tube type
- DOT approved for Street use
- Available in 2 popular sizes

DUAL SPORT



PART #	FRONT/REAR	SIZE	PLY RATING	SPEED/LOAD	OD INCHES	SW INCHES	MAX LOAD LBS	MAX PSI	TREAD DEPTH - MM	WEIGHT LBS	RIM SIZE	TT/TL	DOT Y/N
K270 DUAL SPORT													
042701738B0	REAR	325-17	4PR	50P	24	4	419	33	9	7	2.15X17	TT	Y
042701760C0	REAR	460-17	6PR	65P	25	5	638	40	14	11	2.15X17	TT	Y
042701764C0	REAR	510-17	6PR	71P	26	5	761	40	15	14	3.00X17	TT	Y
042701834B0	FRONT	275-18	4PR	42P	24	3	331	33	7	6	1.85X18	TT	Y
042701842B0	REAR	350-18	4PR	56P	26	4	494	33	9	9	2.15X18	TT	Y
042701850B0	REAR	400-18	4PR	64P	26	4	617	33	12	11	2.15X18	TT	Y
042701852B0	REAR	410-18	4PR	58P	25	4	520	33	9	9	2.15X18	TT	Y
042701858C0	REAR	450-18	6PR	73P	27	5	805	40	16	13	2.50X18	TT	Y
042701860B0	REAR	460-18	4PR	63P	26	4	600	33	14	11	2.50X18	TT	Y
042701864C0	REAR	510-18	6PR	73P	27	5	805	40	15	15	3.00X18	TT	Y
042701805C1	REAR	100/90-18	4PR	62P	25	4	584	33	13	10	2.50X18	TT	Y
042701806C1	REAR	120/80-18	4PR	68P	26	5	694	40	14	11	2.75X18	TT	Y
042702134B0	FRONT	275-21	4PR	43P	27	3	364	33	7	6	1.85X21	TT	Y
042702136B0	FRONT	300-21	6PR	51P	28	3	430	33	10	8	1.85X21	TT	Y
042702138B0	FRONT	325-21	4PR	57P	28	4	507	33	9	9	2.15X21	TT	Y
K335 ICE TIRE													
043351850B0	REAR	400-18	4 PR	64P	27	5	617	32	12	14	2.15X18	TT	Y
043351850C0	REAR	400-18	6PR	69P	27	5	717	40	12	14	2.15X18	TT	Y
043351950B0	REAR	400-19	4 PR	65P	27	5	639	32	12	13	2.15X18	TT	Y
043351950C0	REAR	400-19	6PR	71P	27	5	761	40	12	14	2.15X19	TT	Y
K678 BIG BLOCK PAVER													
04678170101	REAR	130/80B17		65H	25	5	639	42	9	15	3.00X17	TL	Y
04678170201	REAR	150/70B17		69H	25	6	716	42	9	19	4.25X17	TL	Y
04678170301	REAR	170/60B17		72H	25	7	783	42	9	18	4.50X17	TL	Y
04678180101	REAR	140/80B18		70H	27	6	739	42	9	18	3.50X18	TL	Y
04678180201	REAR	150/70B18		70H	26	6	739	42	9	17	4.25X18	TL	Y
04678190101	FRONT	100/90B19		57H	26	4	507	42	5	11	2.15X19	TL	Y
04678190201	FRONT	110/80B19		59H	25	4	536	42	5	13	2.50X19	TL	Y
04678190301	FRONT	120/70B19		60H	26	5	551	42	5	12	3.50X19	TL	Y
04678210101	FRONT	90/90B21		54H	27	4	467	42	5	11	2.15X21	TL	Y
K760 TRAKMASTER													
047601032C0	REAR	250-10	6PR	38M	15	3	291	40	6	3	1.50X10	TT	Y
047601203C0	REAR	80/100-12	6PR	50M	18	3	419	33	10	4	1.85X12	TT	Y
047601401C0	FRONT	60/100-14	6PR	38M	19	2	291	40	8	3	1.50X14	TT	Y
047601404C0	REAR	90/100-14	6PR	49M	22	4	408	33	14	8	1.85X14	TT	Y
047601604C0	REAR	90/100-16	6PR	58M	23	4	430	40	13	8	1.85X16	TT	Y
047601702C0	FRONT	70/100-17	6PR	46M	23	3	374	40	10	6	1.60X17	TT	Y
047601709C0	REAR	130/90-17	6PR	68M	26	6	694	33	16	12	3.00X17	TT	Y
047601807C0	REAR	100/100-18	6PR	59M	26	5	536	33	16	11	2.50X18	TT	Y
047601811C0	REAR	110/100-18	6PR	64M	27	5	617	33	17	12	2.50X18	TT	Y
047601813C0	REAR	120/100-18	6PR	68M	27	5	694	33	17	12	2.75X18	TT	Y
047601902C0	FRONT	70/100-19	6PR	42M	25	3	331	40	10	7	1.60X19	TT	Y
047601906C0	REAR	100/90-19	6PR	57M	26	4	507	33	16	10	2.15X19	TT	Y
047601910C0	REAR	110/90-19	6PR	62M	27	5	584	33	17	11	2.15X19	TT	Y
047601912C0	REAR	120/90-19	6PR	66M	28	5	661	33	17	12	2.50X19	TT	Y
047602103C0	FRONT	80/100-21	6PR	51M	27	4	430	33	13	9	1.60X21	TT	Y

PART #	FRONT/ REAR	SIZE	PLY RATING	SPEED/ LOAD	OD INCHES	SW INCHES	MAX LOAD LBS	MAX PSI	TREAD DEPTH - MM	WEIGHT LBS	RIM SIZE	TT/TL	DOT Y/N
K761 DUAL SPORT													
0476110281	F/R	120/90-10	4PR	57J	19	5	507	25	6	8	2.75X10	TL	Y
04761101481	F/R	130/90-10	4PR	61J	19	5	567	25	6	9	3.00X10	TL	Y
04761122281	F/R	110/70-12	4PR	47J	18	4	386	33	6	7	3.00X12	TL	Y
04761121081	F/R	110/90-12	4PR	64J	20	4	617	36	6	8	2.50X12	TL	Y
04761128681	F/R	120/70-12	4PR	51J	19	5	430	33	6	7	3.50X12	TL	Y
04761127981	F/R	120/80-12	4PR	65J	20	5	639	36	6	9	2.75X12	TL	Y
04761120981	F/R	130/70-12	4PR	56J	19	5	494	33	6	8	3.50X12	TL	Y
04761127881	F/R	130/80-12	4PR	69J	20	5	716	36	6	9	3.00X12	TL	Y
04761122081	F/R	140/70-12	4PR	60J	20	6	551	33	6	8	3.75X12	TL	Y
04761128181	F/R	130/60-13	4PR	53J	19	5	454	33	6	7	3.50X13	TL	Y
04761128781	F/R	140/60-13	4PR	57J	20	6	507	33	6	8	3.75X13	TL	Y
04761160681	F/R	100/90-16	4PR	54P	23	4	467	33	6	8	2.50X16	TL	Y
04761179181	F/R	120/90-17	4PR	64H	26	5	617	33	10	13	2.75X17	TL	Y
04761177881	REAR	130/80-17	4PR	65H	25	5	639	33	10	13	3.00X17	TL	Y
04761182381	F/R	110/80-18	4PR	58H	25	4	520	33	10	12	2.50X18	TL	Y
04761187981	F/R	120/80-18	4PR	62H	26	5	584	33	10	13	2.75X18	TL	Y
04761190581	F/R	100/90-19	4PR	57H	26	4	507	33	8	12	2.50X19	TL	Y
04761210881	FRONT	90/90-21	4PR	54H	27	4	467	33	8	11	2.15X21	TL	Y
04761160781	FRONT	130/90-16	4PR	73H	25	5	805	42	7	8	3.00X16	TL	Y
04761160881	REAR	130/90-16	4PR	73H	25	5	805	42	9	9	3.00X16	TL	Y
04761160981	REAR	150/80-16	4PR	71H	26	6	761	42	9	9	3.50X16	TL	Y
K784 BIG BLOCK													
04784120181	FRONT	120/70-12		51P	19	5	946	33	10	7	3.50X12	TL	Y
04784120281	REAR	130/70-12		56P	19	5	1087	33	10	9	3.50X12	TL	Y
04784160181	REAR	140/90-16		77Q	26	6	906	42	11	16	3.50X16	TL	Y
04784177780	REAR	130/80B17		65T	25	5	638	36	11	14	3.00X17	TL	Y
04784172180	REAR	150/70B17		69Q	25	6	715	36	11	16	4.25X17	TL	Y
04784178780	REAR	170/60B17		72Q	25	7	781	36	11	18	4.50X17	TL	Y
04784182280	REAR	140/80B18		70R	27	6	737	36	11	15	3.50X18	TL	Y
04784182180	REAR	150/70B18		70Q	26	6	737	36	11	16	4.25X18	TL	Y
04784190580	FRONT	100/90B19		57S	26	4	506	36	9	11	2.50X19	TL	Y
04784192380	FRONT	110/80B19		59Q	25	4	535	36	9	11	2.50X19	TL	Y
04784198680	FRONT	120/70B19		60Q	26	5	550	36	9	12	3.50X19	TL	Y
04784210880	FRONT	90/90B21		54T	27	4	466	36	9	11	2.15X21	TL	Y



***“SOMETIMES YOU
JUST NEED AN OPEN
ROAD TO GET YOUR
HEAD STRAIGHT.”***

--ANONYMOUS--

STREET



NEW

KANINE

KR20



- Designed for 3-wheel autocycle applications
- Increased mileage and better handling than competitors
- Performance pattern reduces rolling resistance while retaining maximum lateral traction
- Engineered with more siping to evacuate standing water and provide excellent wet weather performance
- MC-spec, DOT, and E-Mark approved
- Available in 2 popular sizes

CATACLYSM

K6702



- Dual-compound technology for improved mileage and added shoulder grip
- Efficiently disperses water while minimizing uneven wear
- Designed to roll under the largest, heaviest bikes on the market
- Tubeless construction
- DOT approved / H-rated
- Available in 17 popular sizes



KRUZ

K673

KENDA
KRUZ



- Excellent choice for heavy cruisers and tourers
- One of the best values on the market, with great all-weather grip, mileage and price
- Tubeless construction
- DOT approved / H-rated
- Available in 17 popular sizes



CHALLENGER

K657



- Excellent choice for middleweight sport-touring motorcycles
- Tread pattern designed for all-weather riding
- Tubeless construction
- DOT approved / H-rated
- Available in 14 popular sizes



STREET



RETROACTIVE

K676F/K676

KENDA
RETROACTIVE

- Sport bias belted tire for the classic bikes of the 70s, 80s and 90s
- Advanced rubber compound for improved durability and mileage
- Redesigned crown radius for larger footprint in corners
- Tubeless construction
- DOT approved / V-rated
- Available in 12 popular sizes

**CRUISER**

K671



- One of the most popular choices on the market for heavy cruisers and tourers
- Deep offset tread grooves for all-weather riding
- Tubeless construction
- DOT approved / H-rated
- Available in 13 popular sizes





STREET

PART #	FRONT/ REAR	SIZE	PLY RATING	SPEED/ LOAD	OD INCHES	SW INCHES	MAX LOAD LBS	MAX PSI	TREAD DEPTH - MM	WEIGHT LBS	RIM SIZE	TT/TL	DOT Y/N
K657 CHALLENGER													
046571514C1	REAR	130/90-15	6PR	66H	24	5	661	40	6	14	3.00X15	TL	Y
046571516C1	REAR	140/90-15	6PR	70H	25	6	738	40	7	16	3.50X15	TL	Y
046571612C1	REAR	120/90-16	6PR	63H	25	5	600	40	6	12	2.75X16	TL	Y
046571618C1	FRONT	130/90-16	6PR	74H	25	5	827	40	6	16	3.00X16	TL	Y
046571614C1	REAR	130/90-16	6PR	74H	25	5	827	40	6	16	3.00X16	TL	Y
046571616C1	REAR	140/90-16	6PR	77H	26	6	908	40	7	17	3.50X16	TL	Y
046571714C1	REAR	130/90-17	6PR	68H	26	5	694	40	6	15	3.00X17	TL	Y
046571805C1	FRONT	100/90-18	6PR	56H	25	4	494	40	4	10	2.50X18	TL	Y
046571810C1	REAR	110/90-18	6PR	61H	26	4	567	40	6	12	2.50X18	TL	Y
046571812C1	REAR	120/90-18	6PR	65H	27	5	639	40	6	14	2.75X18	TL	Y
046571814C1	REAR	130/90-18	6PR	69H	27	5	716	40	6	16	3.00X18	TL	Y
046571905C1	FRONT	100/90-19	6PR	57H	26	4	507	40	4	10	2.50X19	TL	Y
046571910C1	FRONT	110/90-19	6PR	68H	27	4	694	40	4	12	2.50X19	TL	Y
046572104C1	FRONT	90/100-21	6PR	56H	28	4	494	40	4	12	2.15X21	TL	Y
K6702 CATAclysm													
046702150101	REAR	170/80B15	4	77H	26	7	908	42	7	22	4.00X15	TL	Y
046702160101	FRONT	130/90B16	4	67H	25	5	677	42	5	20	3.00X16	TL	Y
046702160201	REAR	130/90B16	6	73H	25	5	805	42	7	17	3.00X16	TL	Y
046702160301	REAR	140/90B16	6	77H	26	6	908	42	7	19	3.50X16	TL	Y
046702160401	REAR	150/80B16	6	77H	25	6	908	42	7	20	3.50X16	TL	Y
046702160501	REAR	180/65B16	6	81H	25	7	1019	42	7	20	5.00X16	TL	Y
046702170101	FRONT	130/80B17	4	65H	25	5	639	42	5	16	3.00X17	TL	Y
046702170201	REAR	160/70B17	6	79H	26	6	963	42	7	21	4.50X17	TL	Y
046702180101	FRONT	130/70B18	4	63H	26	5	600	42	5	16	3.50X18	TL	Y
046702190301	FRONT	130/60B19	4	61H	25	5	567	42	5	10	3.50X19	TL	Y
046702190101	FRONT	100/90B19	4	57H	26	4	507	42	5	11	2.50X19	TL	Y
046702210101	FRONT	80/90-21	6	54H	27	3	467	42	5	9	1.85X21	TL	Y
046702210201	FRONT	90/90-21	4	54H	27	4	467	42	5	10	2.15X21	TL	Y
046702210301	FRONT	130/60B21	4	63H	27	5	600	42	5	11	3.50X21	TL	Y
K671 CRUISER													
046711514C1	REAR	130/90-15	6PR	66H	24	5	661	40	6	14	3.00X15	TL	Y
046711526C1	REAR	170/80-15	6PR	77H	26	7	908	40	7	19	4.00X15	TL	Y
046711610C1	FRONT	100/90-16	6PR	54H	23	4	467	40	4	10	2.50X16	TL	Y
046711622C1	FRONT	110/70-16	6PR	52P	22	4	441	33	5	8	3.00X16	TL	Y
046711614C1	REAR	130/90-16	6PR	74H	25	5	827	40	6	16	3.00X16	TL	Y
046711620C1	REAR	140/70-16	6PR	65P	24	6	639	33	6	11	3.75X16	TL	Y
046711722C1	FRONT	110/70-17	6PR	54H	23	4	467	40	4	9	3.00X17	TL	Y
046711723C1	FRONT	110/80-17	6PR	57H	24	4	507	40	4	11	2.50X17	TL	Y
046711719C1	REAR	130/70-17	6PR	62H	24	5	584	40	6	12	3.50X17	TL	Y
046711720C1	REAR	140/70-17	6PR	66H	25	6	661	40	6	12	3.75X17	TL	Y
046711721C1	REAR	150/70-17	6PR	69H	25	6	716	40	7	14	4.25X17	TL	Y
046711808C1	FRONT	90/90-18	6PR	51H	24	4	430	40	4	9	2.15X18	TL	Y
046711819C1	REAR	130/70-18	6PR	63H	25	5	600	40	6	12	3.50X18	TL	Y
046711820C1	REAR	140/70-18	6PR	67H	26	6	677	40	6	14	3.75X18	TL	Y
046711905C1	FRONT	100/90-19	6PR	57H	26	4	507	40	4	10	2.50X19	TL	Y

PART #	FRONT/ REAR	SIZE	PLY RATING	SPEED/ LOAD	OD INCHES	SW INCHES	MAX LOAD LBS	MAX PSI	TREAD DEPTH - MM	WEIGHT LBS	RIM SIZE	TT/TL	DOT Y/N
K673 KRUZ													
046731516B1	REAR	140/90-15	4PR	70H	25	6	738	40	7	19	3.50X15	TL	Y
046731524B1	REAR	150/90-15	4PR	74H	26	6	827	40	8	21	3.50X15	TL	Y
046731526B1	REAR	170/80-15	4PR	77H	26	7	908	40	8	23	4.00X15	TL	Y
046731614C1F	FRONT	130/90-16	4PR	72H	25	5	827	40	4	17	3.00X16	TL	Y
046731614C1	REAR	130/90-16	4PR	74H	25	5	827	40	7	18	3.00X16	TL	Y
046731616C1	REAR	140/90-16	4PR	77H	26	6	908	40	9	21	3.50X16	TL	Y
046731625B1F	FRONT	150/80-16	4PR	71H	25	6	761	40	7	17	3.50X16	TL	Y
046731625B1	REAR	150/80-16	4PR	71H	25	6	761	40	7	19	3.50X16	TL	Y
046731626B1	REAR	160/80-16	4PR	75H	26	6	853	40	9	22	4.00X16	TL	Y
046731712C1	FRONT	120/90-17	4PR	64H	26	5	617	40	5	15	2.75X17	TL	Y
046731782C1	FRONT	140/80-17	4PR	69H	26	6	716	41	5	17	3.50X17	TL	Y
046731810B1	FRONT	110/90-18	4PR	61H	26	4	567	40	5	11	2.50X18	TL	Y
046731812C1	FRONT	120/90-18	4PR	71H	27	5	761	40	5	14	2.75X18	TL	Y
046731819F1	FRONT	130/70-18	4PR	63H	25	5	600	40	5	15	3.50X18	TL	Y
046731905C1	FRONT	100/90-19	4PR	57H	26	4	507	40	5	11	2.50X19	TL	Y
046731910B1	FRONT	110/90-19	4PR	62H	27	4	584	40	5	12	2.50X19	TL	Y
046732176C1	FRONT	80/90-21	4PR	48H	27	3	397	40	3	9	1.85X21	TL	Y
K676 RETROACTIVE													
046761679B1	FRONT	120/80B16	4PR	60V	24	5	551	42	4	11	2.75X16	TL	Y
046761614B1	REAR	130/90B16	4PR	67V	25	5	677	42	7	16	3.00X16	TL	Y
046761627B1	REAR	150/80B16	4PR	71V	25	6	761	42	7	16	3.50X16	TL	Y
046761722B1	FRONT	110/70B17	4PR	54V	23	4	467	42	4	8	3.00X17	TL	Y
046761723B1	FRONT	110/80B17	4PR	57V	24	4	507	42	4	9	2.50X17	TL	Y
046761719B1	REAR	130/70B17	4PR	62V	24	5	584	42	7	12	3.50X17	TL	Y
046761715B1	REAR	140/80B17	4PR	69V	26	6	716	42	7	16	3.50X17	TL	Y
046761721B1	REAR	150/70B17	4PR	69V	25	6	716	42	7	16	4.25X17	TL	Y
046761805B1	FRONT	100/90B18	4PR	56V	25	4	494	42	4	10	2.50X17	TL	Y
046761812B1	REAR	120/90B18	4PR	65V	26	5	639	42	7	16	2.75X18	TL	Y
046761878B1	REAR	130/80B18	4PR	66V	26	5	661	42	7	16	3.00X18	TL	Y
046761905B1	FRONT	100/90B19	4PR	57V	26	4	507	42	4	10	2.50X19	TL	Y
KR20 KANINE													
042015001A1	FRONT	165/55R15	4PR	55H	23	7	481	44	7	15	5.00X15	TL	Y
042015002A1	REAR	225/50R15	4PR	76H	24	9	882	44	8	18	7.00X15	TL	Y

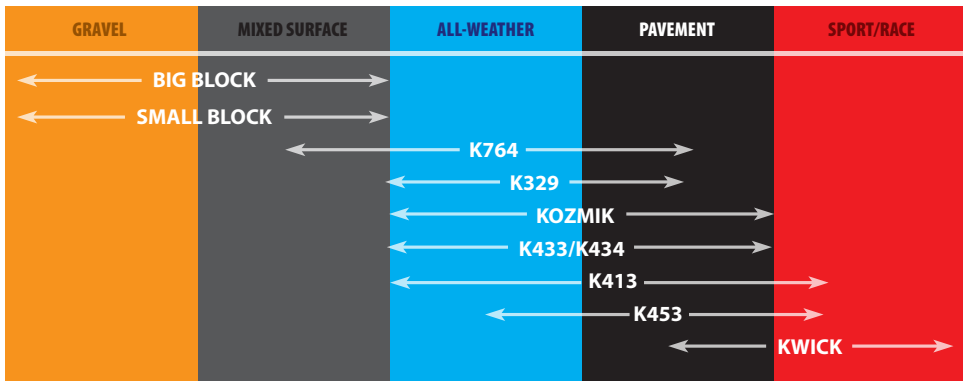


**“HAPPINESS IS
A FULL TANK
OF GAS AND
TWO NEW
TIRES.”**

--ANONYMOUS--



SCOOTER/MINI-MOTO TIRE TERRAIN GUIDE



G GRAVEL

M MIXED SURFACE

A ALL-WEATHER

P PAVEMENT

R SPORT/RACE



BIG BLOCK

K784



- Our famous ADV tire, now for small bore bikes
- Deep lugs help take your Honda Grom, Monkey or Kawasaki Z125 to places it's never been before
- Great wear allows for daily riding on all surfaces
- Available in 12 popular sizes



SMALL BLOCK

K262



- Classic waffle tread pattern with offset shoulder lugs for increased stability
- 50/50 street/dirt application for confidence on all surfaces
- Perfect for smaller street and trail bikes
- DOT and E-Mark compliant
- Available in 4 popular sizes



KWICK

KD1

KENDA
KWICK



- Race-inspired super sticky compound
- Enhanced water drainage and professional-level grip
- Designed for low rolling resistance and optimal cornering traction
- Ideal for Honda Grom, Monkey, Kawasaki Z125 and similar lightweight street bikes
- Available in 6 popular sizes



K413



- Race-inspired tread pattern
- Designed for performance in all-weather conditions
- Engineered to evacuate water efficiently and maintain traction in fast corners
- Available in 16 popular sizes



KOZMIK K6022



- All-weather performance tread for uncompromising grip in all conditions
- Long-wearing compound provides increased mileage without sacrificing performance
- Available in 14 popular sizes



WINTER TIRE K701



- Unique compound for cold weather traction
- Tread and sipes designed for improved traction in wintry conditions
- DOT and E-Mark compliant
- Available in 5 sizes



K329



- Performance-style tread pattern
- Balanced design for both mileage and wet weather traction
- Available in 6 popular sizes

A P

K433F/K434



- Performance-style tread pattern
- Sport-oriented riding tire
- Compound designed for long wear and mileage
- Available in 14 popular sizes

A P



K764



- Designed for long wear and confident grip
- Aggressive tread pattern for optimal tracking in wet or dry weather conditions
- Available in 15 popular sizes

M A P

K453



- Sport tread designed with performance-based scooters in mind
- Deep grooves to evacuate standing water
- Available in 8 popular sizes

A P R





PART #	FRONT/ REAR	SIZE	PLY RATING	SPEED/ LOAD	OD INCHES	SW INCHES	MAX LOAD LBS	MAX PSI	TREAD DEPTH - MM	WEIGHT LBS	RIM SIZE	TT/TL	DOT Y/N
K262 SMALL BLOCK													
042621701B0	F/R	275-17	4PR	41P	23	3	320	33	7	5	1.85X17	TT	Y
042621702B0	F/R	300-17	4PR	45P	24	3	364	33	8	7	1.85X17	TT	Y
042621703B0	F/R	325-17	4PR	50P	24	4	419	33	8	7	2.15X17	TT	Y
042621801B0	F/R	275-18	4PR	42P	24	3	331	33	7	6	1.85X18	TT	Y
K329													
043291032B0	F/R	250-10	4PR	33J	15	3	254	33	4	8	1.50X10	TT	Y
043291034B0	F/R	275-10	4PR	37J	16	3	282	33	4	3	1.75X10	TT	Y
043291041B1	F/R	350-10	4PR	51J	17	4	430	36	6	5	2.50X10	TL	Y
043291008B1	F/R	90/90-10	4PR	50J	16	4	419	36	6	4	2.15X10	TL	Y
043291012B1	F/R	120/90-10	4PR	56J	19	5	507	25	5	12	2.75X10	TL	Y
043291016B1	F/R	140/90-10	6PR	70J	20	6	739	40	6	10	3.00X10	TL	Y
K413													
044131035B1	F/R	300-10	4PR	42J	16	3	331	36	5	7	2.15X10	TL	Y
044131041B1	F/R	350-10	4PR	51J	17	4	430	36	5	8	2.50X10	TL	Y
044131008B1	F/R	90/90-10	4PR	50J	16	4	419	36	5	12	2.15X10	TL	Y
044131024B1	F/R	100/80-10	4PR	52J	16	4	441	36	5	5	2.50X10	TL	Y
044131010B1	F/R	100/90-10	4PR	56J	17	4	494	36	5	6	2.50X10	TL	Y
044131023B1	F/R	110/80-10	4PR	58J	17	4	520	36	5	6	2.50X10	TL	Y
044131012B1	F/R	120/90-10	4PR	57J	19	5	506	25	5	8	2.75X10	TL	Y
044131009B1	F/R	130/70-10	4PR	52J	17	5	441	33	5	7	3.50X10	TL	Y
044131018B1	F/R	130/90-10	4PR	61J	19	5	567	25	5	12	3.00X10	TL	Y
044131222B1	F/R	110/70-12	4PR	47J	18	4	386	33	5	6	3.00X12	TL	Y
044131286B1	F/R	120/70-12	4PR	51J	19	5	430	33	5	7	3.50X12	TL	Y
044131209B1	F/R	130/70-12	4PR	56J	19	5	494	33	5	8	3.50X12	TL	Y
044131221B1	F/R	140/70-12	4PR	60J	20	6	551	33	5	8	3.75X12	TL	Y
044131386B1	F/R	120/70-13	4PR	53M	20	5	454	33	5	8	3.50X13	TL	Y
044131381B1	F/R	130/60-13	4PR	53J	19	5	454	33	5	7	3.50X13	TL	Y
044131387B1	F/R	140/60-13	4PR	57J	20	6	507	33	6	8	3.75X13	TL	Y
K433													
044331222B1	FRONT	110/70-12	4PR	47L	18	4	386	33	5	6	3.00X12	TL	Y
044331223C1	FRONT	110/80-12	6PR	65J	19	4	639	40	5	8	2.50X12	TL	Y
044331286C1	FRONT	120/70-12	6PR	58M	19	5	520	40	5	7	3.50X12	TL	Y
044331486B1	FRONT	120/70-14	4PR	55S	21	5	481	33	5	9	3.50X14	TL	Y
044331479B1	FRONT	120/80-14	4PR	58S	22	5	520	33	5	10	2.75X14	TL	Y
044331586B1	FRONT	120/70-15	4PR	56S	22	5	494	33	5	10	3.50X15	TL	Y
K434													
044341321B1	REAR	150/70-13	4PR	64S	21	6	617	33	6	13	4.25X13	TL	Y
044341421B1	REAR	150/70-14	4PR	66S	22	6	661	33	6	13	4.25X14	TL	Y
K453													
044531041B1	F/R	350-10	4PR	51L	17	4	430	36	5	6	2.50X10	TL	Y
044531008B1	F/R	90/90-10	4PR	50L	16	4	419	36	5	5	2.15X10	TL	Y
044531024B1	F/R	100/80-10	4PR	53L	16	4	454	36	5	5	2.50X10	TL	Y
044531005B1	F/R	100/90-10	4PR	56L	17	4	494	36	5	6	2.50X10	TL	Y
044531023B1	F/R	110/80-10	4PR	58L	17	4	520	36	5	6	2.50X10	TL	Y
044531222B1	F/R	110/70-12	4PR	47L	18	4	386	33	5	6	3.00X12	TL	Y

PART #	FRONT/ REAR	SIZE	PLY RATING	SPEED/ LOAD	OD INCHES	SW INCHES	MAX LOAD LBS	MAX PSI	TREAD DEPTH - MM	WEIGHT LBS	RIM SIZE	TT/TL	DOT Y/N
044531286B1	F/R	120/70-12	4PR	51L	19	5	430	33	5	7	3.50X12	TL	Y
044531209B1	F/R	130/70-12	4PR	56L	19	5	494	33	5	8	3.50X12	TL	Y
K6022 KOZMIK													
04602210501	F/R	350-10		51J	17	4	430	36	5	6	3.00X12	TL	Y
04602212101	F/R	110/70-12		47L	18	4	386	33	6	7	3.00X12	TL	Y
04602212201	F/R	120/70-12		51L	18	5	430	33	6	8	3.50X12	TL	Y
04602212301	F/R	130/70-12		56L	19	5	494	33	6	9	3.50X12	TL	Y
K701 WINTER TIRE													
047011035C1	F/R	300-10	6 PR	47L	16	3	386	40	6	5	2.15X10	TL	Y
047011041C1	F/R	350-10	6 PR	56L	17	4	494	40	6	6	2.50X10	TL	Y
047011286C1	F/R	120/70-12	6 PR	58P	19	5	520	40	6	7	3.50X12	TL	Y
047011209C1	F/R	130/70-12	6 PR	62P	19	5	584	40	6	8	3.50X12	TL	Y
047011381C1	F/R	130/60-13	6 PR	60P	19	5	551	40	6	7	3.50X13	TL	Y
K764													
047641012B1	REAR	120/90-10	4PR	66M	19	5	661	36	5	8	2.75X10	TL	Y
047641018B1	REAR	130/90-10	4PR	61M	19	5	567	25	5	8	3.00X10	TL	Y
047641222C1	FRONT	110/70-12	6PR	54J	19	4	467	40	6	8	3.00X12	TL	Y
047641223B1	REAR	110/80-12	4PR	61J	19	4	567	36	5	7	2.50X12	TL	Y
047641286B1	FRONT	120/70-12	4PR	51P	19	5	430	33	5	12	3.50X12	TL	Y
047641209B1	REAR	130/70-12	4PR	56M	19	5	494	33	5	8	3.50X12	TL	Y
047641220C1	REAR	140/70-12	4PR	60M	20	6	551	33	5	9	3.75X12	TL	Y
047641381B1	REAR	130/60-13	4PR	53P	19	5	454	33	5	7	3.50X13	TL	Y
047641387B1	REAR	140/60-13	4PR	57P	20	6	507	33	6	8	3.75X13	TL	Y
047641486B1	FRONT	120/70-14	4PR	55P	21	5	481	33	5	8	3.50X14	TL	Y
047641487C1	REAR	140/60-14	6PR	64P	21	6	617	33	6	9	3.75X14	TL	Y
047641420B1	REAR	140/70-14	4PR	62L	22	6	584	33	5	10	3.75X14	TL	Y
047641738B1	REAR	325-17	4PR	50P	24	4	419	33	6	8	2.15X17	TL	Y
047641741B1	REAR	350-17	4PR	54P	25	4	551	33	7	10	2.15X17	TL	Y
047641834B1	FRONT	275-18	4PR	42P	24	3	331	33	5	7	1.85X18	TL	Y
K784 BIG BLOCK													
047841201B1	FRONT	120/70-12	4PR	51P	19	5	946	33	10	7	3.50X12	TL	Y
047841202B1	REAR	130/70-12	4PR	56P	19	5	1087	33	10	9	3.50X12	TL	Y
047841601B1	REAR	140/90-16	4PR	77Q	26	6	906	42	11	16	3.50X16	TL	Y
047841777B0	REAR	130/80B17	4PR	65T	25	5	638	36	11	14	3.00X17	TL	Y
047841721B0	REAR	150/70B17	4PR	69Q	25	6	715	36	11	16	4.25X17	TL	Y
047841787B0	REAR	170/60B17	4PR	72Q	25	7	781	36	11	18	4.50X17	TL	Y
047841822B0	REAR	140/80B18	4PR	70R	27	6	737	36	11	15	3.50X18	TL	Y
047841821B0	REAR	150/70B18	4PR	70Q	26	6	737	36	11	16	4.25X18	TL	Y
047841905B0	FRONT	100/90B19	4PR	57S	26	4	506	36	9	11	2.50X19	TL	Y
047841923B0	FRONT	110/80B19	4PR	59Q	25	4	535	36	9	11	2.50X19	TL	Y
047841986B0	FRONT	120/70B19	4PR	60Q	26	5	550	36	9	12	3.50X19	TL	Y
047842108B0	FRONT	90/90B21	4PR	54T	27	4	466	36	9	11	2.15X21	TL	Y

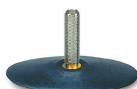
PART #	FRONT/ REAR	SIZE	PLY RATING	SPEED/ LOAD	OD INCHES	SW INCHES	MAX LOAD LBS	MAX PSI	TREAD DEPTH - MM	WEIGHT LBS	RIM SIZE	TT/TL	DOT Y/N
KD1 KWICK													
04KD1120011	REAR	120/70-12		51L	19	5	430	33	4	7	3.50X12	TL	Y
04KD1120021	REAR	120/80-12		55J	20	5	481	25	4	9	2.75X12	TL	Y
04KD1120031	REAR	130/70-12		56L	19	5	494	33	4	8	3.50X12	TL	Y
04KD1F120011	FRONT	100/90-12		49J	19	4	408	25	4	8	2.50X12	TL	Y
04KD1F120021	FRONT	110/70-12		47L	18	4	386	33	4	7	3.00X12	TL	Y
04KD1F120031	FRONT	120/70-12		51L	19	5	430	33	4	8	3.50X12	TL	Y



VALVE TYPES



TR-4



TR-6



TR-13



JS-87C

MOTORCYCLE INNER TUBES

SIZE	TR-4	TR-6	TR-13	TR-87/ JS-87C	STD	TUFF	SUPER TUFF
410/350-4				•	•		
410/350-5				•	•		
410/350-6				•	•		
3.00-8				•	•		
3.50-8				•	•		
480/400-8			•		•		
570/500-8			•		•		
400-9			•		•		
2.50/2.75-10	•			•	•	•	
3.00/3.25-10	•		•	•	•		
3.50/4.00-10		•	•	•	•		
400/450-10		•	•	•	•		
2.50-12	•					•	
120/130/70-12		•		•	•		
2.75/3.00-12	•				•		
3.00/3.25-12 (80/100-12)	•				•		
3.25/3.50-12		•			•		
400/450-12		•			•		
2.00/2.25/2.50-14	•				•		
2.25/2.50-14 (60/100-14)	•				•	•	
2.50/2.75-14	•				•		
2.75/3.00-14	•				•		
3.25/3.50-14	•				•		

MOTORCYCLE INNER TUBES

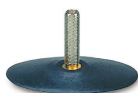
SIZE	TR-4	TR-6	TR-13	TR-87/ JS-87C	STD	TUFF	SUPER TUFF
3.60/4.10-14 (90/100-14)		•			•	•	
2.25/2.50-15	•				•		
2.75/3.00-15	•				•		
3.00/3.25-15 (90/90-15)	•				•	•	
2.00/2.25-16	•				•		
2.25/2.50-16	•				•		
2.50/2.75-16	•				•		
2.75/3.00-16	•				•		
3.00/3.25-16	•				•		
3.25/3.50-16	•				•		
90/100-16	•					•	
4.25/4.50-16		•			•		
2.00/2.25-17	•				•		
2.25/2.50-17 (70/100-17)	•				•	•	
2.50/2.75-17	•				•		
2.75/3.00-17	•				•		
3.00/3.25-17	•				•		
3.25/3.50-17	•				•		
3.75/4.25-17		•			•		
2.25/2.50-18	•				•		
2.50/2.75-18	•				•		
2.75/3.00-18	•				•		
3.00/3.25-18	•				•		
3.25/3.50-18	•				•		
3.50/4.00-18		•			•		
3.75/4.25-18		•			•		
400/450-18 (100/100-18)		•				•	
4.50/5.10-18 (110/100-18, 120/100-18)		•			•		
500/530-18		•			•		
110/100-18		•			•		•
120/100-18		•				•	•
4.30/5.10-18		•			•		
2.00/2.25-19	•				•		
2.25/2.50-19 (70/100-19)		•			•	•	
2.50/2.75-19	•				•		
2.75/3.00-19	•				•		
3.00/3.25-19	•				•		
3.25/3.50-19	•		•		•		
3.50/4.00-19 (100/90-19)		•			•		
100/90-19		•			•	•	
4.00/4.50-19		•			•		
4.50/5.10-19 (110/90-19, 120/90-19)		•			•	•	•
2.75/3.00-21	•				•		
3.00/3.25-21 (80/100-21)	•				•		
80/100-21		•			•	•	•
3.25/3.50-21	•				•		
2.75/3.00-23	•				•		
3.00/3.25-23	•				•		



VALVE TYPES



TR-4



TR-6



TR-13



JS-87C

ATV INNER TUBES

SIZE	TR-4	TR-6	TR-13	TR-87/ JS-87C	STD	TUFF	SUPER TUFF
145/70-6					•		
16X8.00-7		•	•		•		
16X6.50/7.6-8		•	•		•		
18X7.00-8		•	•		•		
20X7.00-8		•			•		
20X10.00-8		•			•		
22X11.00-8		•	•		•		
20X10.00-9		•			•		
20.X12.00-9		•			•		
22X11.00-9		•			•		
25X12.00/13.00-9		•	•		•		
21X7.00-10		•			•		
20.50X8.00-10		•	•		•		
22X8.00-10		•			•		
22X11.00-10		•			•		
23.5X8.00-11		•			•		
24X9.00-11		•			•		
25X8.00-12		•			•		
25X10.00-12		•			•		



*DESIGNED
FOR YOUR
JOURNEY*

KENDA

 /kendapowersports

 /kendapowersport

 /KendaTiresUSA

 Powersports.KendaTire.com

Kenda USA Headquarters • 7095 Americana Parkway • Reynoldsburg, OH 43068